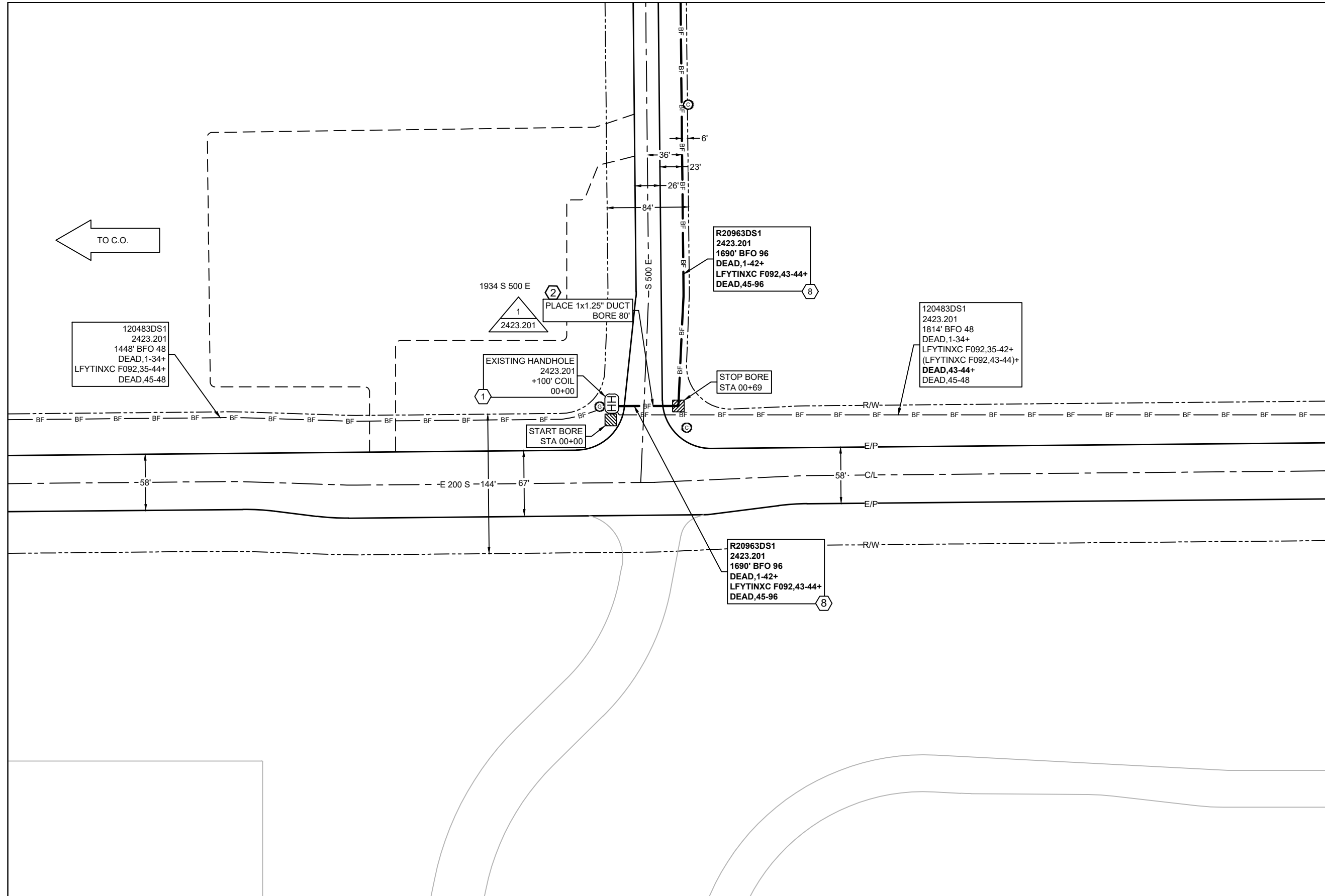




LAFAYETTE
RETAIL-AMAZON.COM SERVICES LLC
1451 VETERANS MEMORIAL PKWY E, LAFAYETTE, IN, USA
OSP WO #2483022



PREPARED BY:
YATES ENGINEERING SERVICES LLC
2536 W. INDUSTRIAL PARK DR, SUITE #1
BLOOMINGTON, IN 47404
812-333-7335



TO C.O.

120483DS1
2423.201
1448' BFO 48
DEAD,1-34+
LFYTINXC F092,35-44+
DEAD,45-48

1934 S 500 E
1
2423.201

2
PLACE 1x1.25" DUCT
BORE 80'

EXISTING HANDHOLE
2423.201
+100' COIL
00+00

START BORE
STA 00+00

R20963DS1
2423.201
1690' BFO 96
DEAD,1-42+
LFYTINXC F092,43-44+
DEAD,45-96

STOP BORE
STA 00+69

120483DS1
2423.201
1814' BFO 48
DEAD,1-34+
LFYTINXC F092,35-42+
(LFYTINXC F092,43-44)+
DEAD,43-44+
DEAD,45-48

R20963DS1
2423.201
1690' BFO 96
DEAD,1-42+
LFYTINXC F092,43-44+
DEAD,45-96

YATES Engineering Services, LLC
2536 W Industrial Park Dr
Suite 1
Bloomington, IN 47404
(812)333-7335

RETAIL-AMAZON.COM SERVICES LLC

WORK ORDER: 2483022 DATE: 7/12/2021

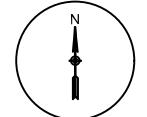
DRAWN BY: YES STAKED BY: YES SCALE: 1:100

COUNTY: TIPPECANOE CITY: LAFAYETTE

ENGINEER: M. GIBSON PHONE: (812) 333-7335

DRAFTER: KO C.O. AREA: LFYT EXCH. CODE: 50662

TWP: 23N
RNG: 3W
SEC: 31

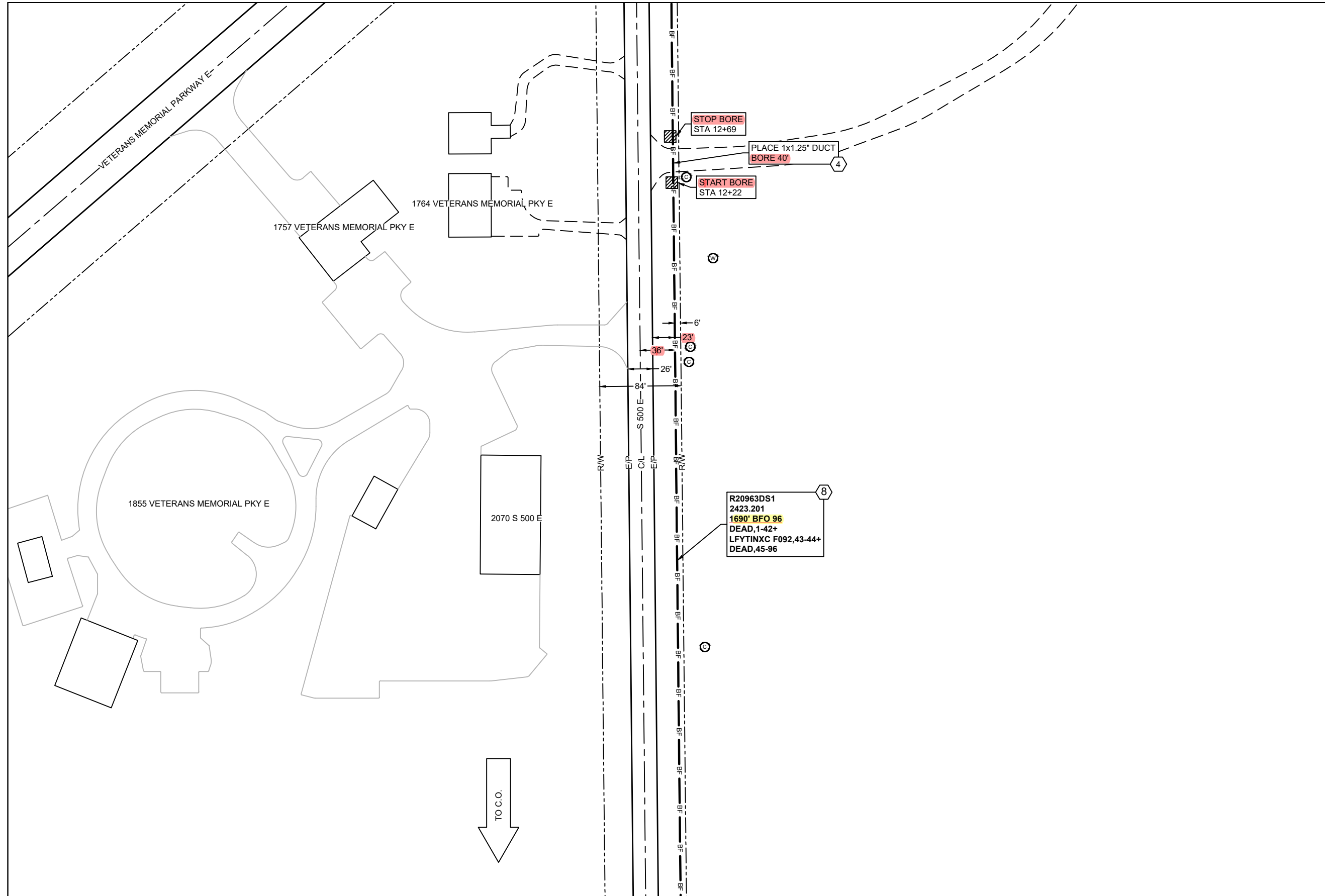


CONSTRUCTION NOTES

1. The exact location of facility placement will be determined after all underground utilities have been located. The preferred route is as close to the Right-of-Way line as possible. Right-of-Way data shown should be considered approximate and not guaranteed.
2. If dielectric fiber is placed, a locate wire must be placed along with the fiber.
3. Known utilities shown are for reference only. Actual utility locations must be determined by 811 prior to construction.
4. The construction area will be restored to the original condition or better.
5. All new handholes are required to be installed on a 6" base of pea gravel.
6. Any changes or deviations in proposed work must be approved by the designated Resident Engineer.



MATCH LINE SEE SHEET 3



MATCH LINE SEE SHEET 1



Yates Engineering Services, LLC
 2536 W Industrial Park Dr
 Suite 1
 Bloomington, IN 47404
 (812)333-7335

RETAIL-AMAZON.COM SERVICES LLC

WORK ORDER: 2483022 DATE: 7/12/2021

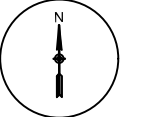
DRAWN BY: YES STAKED BY: YES SCALE: 1:100

COUNTY: TIPPECANOE CITY: LAFAYETTE

ENGINEER: M. GIBSON PHONE: (812) 333-7335

DRAFTER: KO C.O. AREA: LFYT EXCH. CODE: 50662

TWP: 23N
 RNG: 3W
 SEC: 31

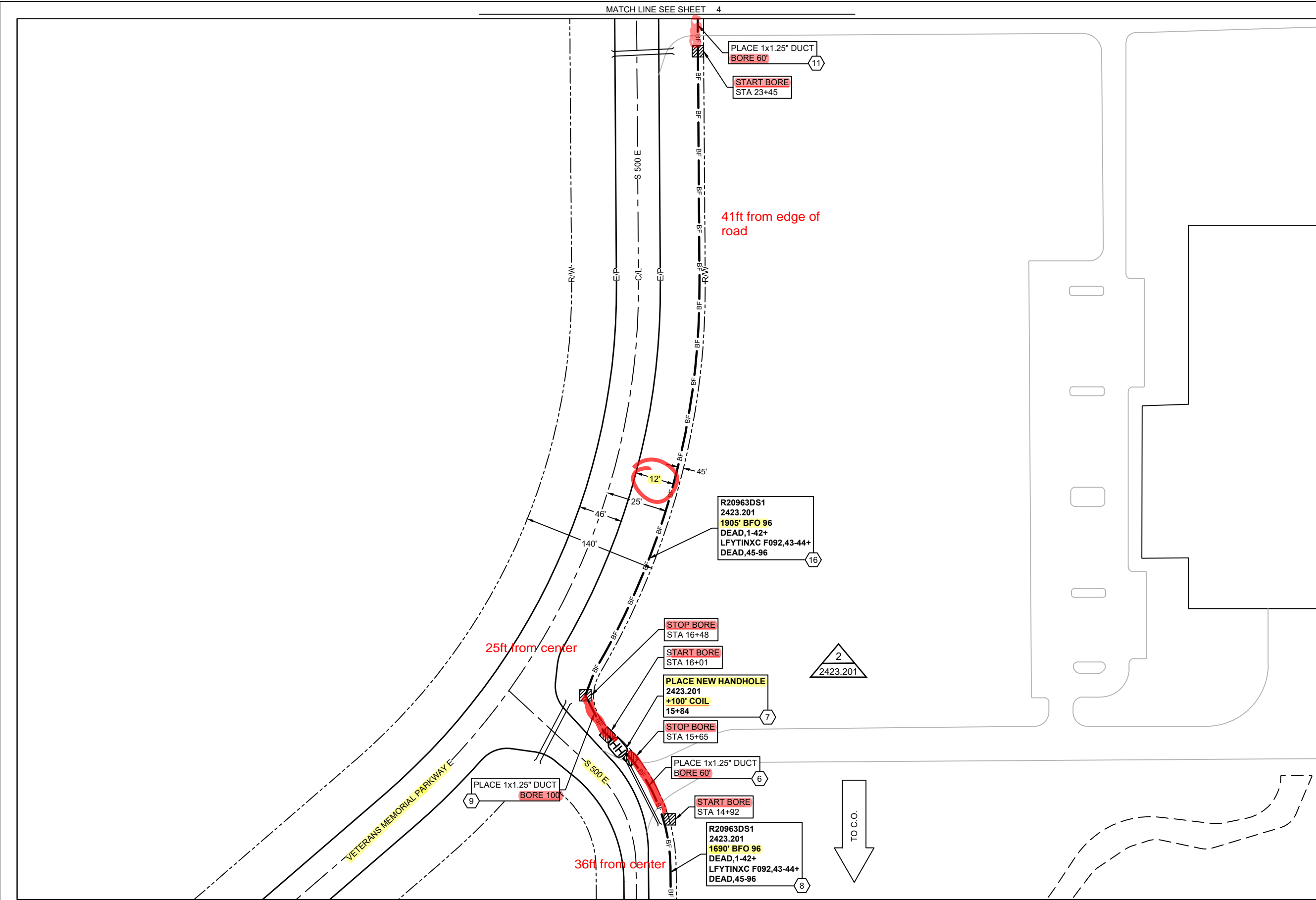


CONSTRUCTION NOTES

1. The exact location of facility placement will be determined after all underground utilities have been located. The preferred route is as close to the Right-of-Way line as possible. Right-of-Way data shown should be considered approximate and not guaranteed.
2. If dielectric fiber is placed, a locate wire must be placed along with the fiber.
3. Known utilities shown are for reference only. Actual utility locations must be determined by 811 prior to construction.
4. The construction area will be restored to the original condition or better.
5. All new handholes are required to be installed on a 6" base of pea gravel.
6. Any changes or deviations in proposed work must be approved by the designated Resident Engineer.



MATCH LINE SEE SHEET 4



MATCH LINE SEE SHEET 2



RETAIL-AMAZON.COM SERVICES LLC

WORK ORDER: 2483022 DATE: 7/12/2021

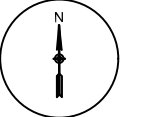
DRAWN BY: YES STAKED BY: YES SCALE: 1:100

COUNTY: TIPPECANOE CITY: LAFAYETTE

ENGINEER: M. GIBSON PHONE: (812) 333-7335

DRAFTER: KO C.O. AREA: LFYT EXCH. CODE: 50662

TWP: 23N
RNG: 3W
SEC: 31



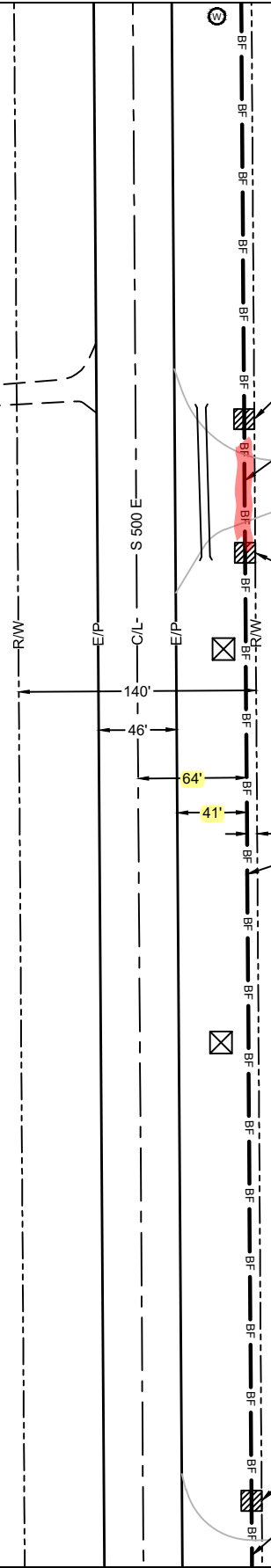
CONSTRUCTION NOTES

1. The exact location of facility placement will be determined after all underground utilities have been located. The preferred route is as close to the Right-of-Way line as possible. Right-of-Way data shown should be considered approximate and not guaranteed.
2. If dielectric fiber is placed, a locate wire must be placed along with the fiber.
3. Known utilities shown are for reference only. Actual utility locations must be determined by 811 prior to construction.
4. The construction area will be restored to the original condition or better.
5. All new handholes are required to be installed on a 6" base of pea gravel.
6. Any changes or deviations in proposed work must be approved by the designated Resident Engineer.



MATCH LINE SEE SHEET 5

1434 VETERANS MEMORIAL PKY E



STOP BORE
STA 30+57

PLACE 1x1.25" DUCT
BORE 79'

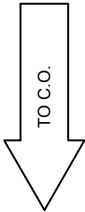
START BORE
STA 29+78

R20963DS1
2423.201
1905' BFO 96
DEAD, 1-42+
LFYTINXC F092, 43-44+
DEAD, 45-96

STOP BORE
STA 24+18

PLACE 1x1.25" DUCT
BORE 60'

1501 VETERANS MEMORIAL PKY E



MATCH LINE SEE SHEET 3

YATES Engineering Services, LLC
2536 W Industrial Park Dr
Suite 1
Bloomington, IN 47404
(812)333-7335

RETAIL-AMAZON.COM SERVICES LLC

WORK ORDER: 2483022 DATE: 7/12/2021

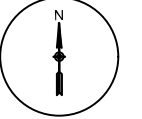
DRAWN BY: YES STAKED BY: YES SCALE: 1:100

COUNTY: TIPPECANOE CITY: LAFAYETTE

ENGINEER: M. GIBSON PHONE: (812) 333-7335

DRAFTER: KO C.O. AREA: LFYT EXCH. CODE: 50662

TWP: 23N
RNG: 3W
SEC: 31

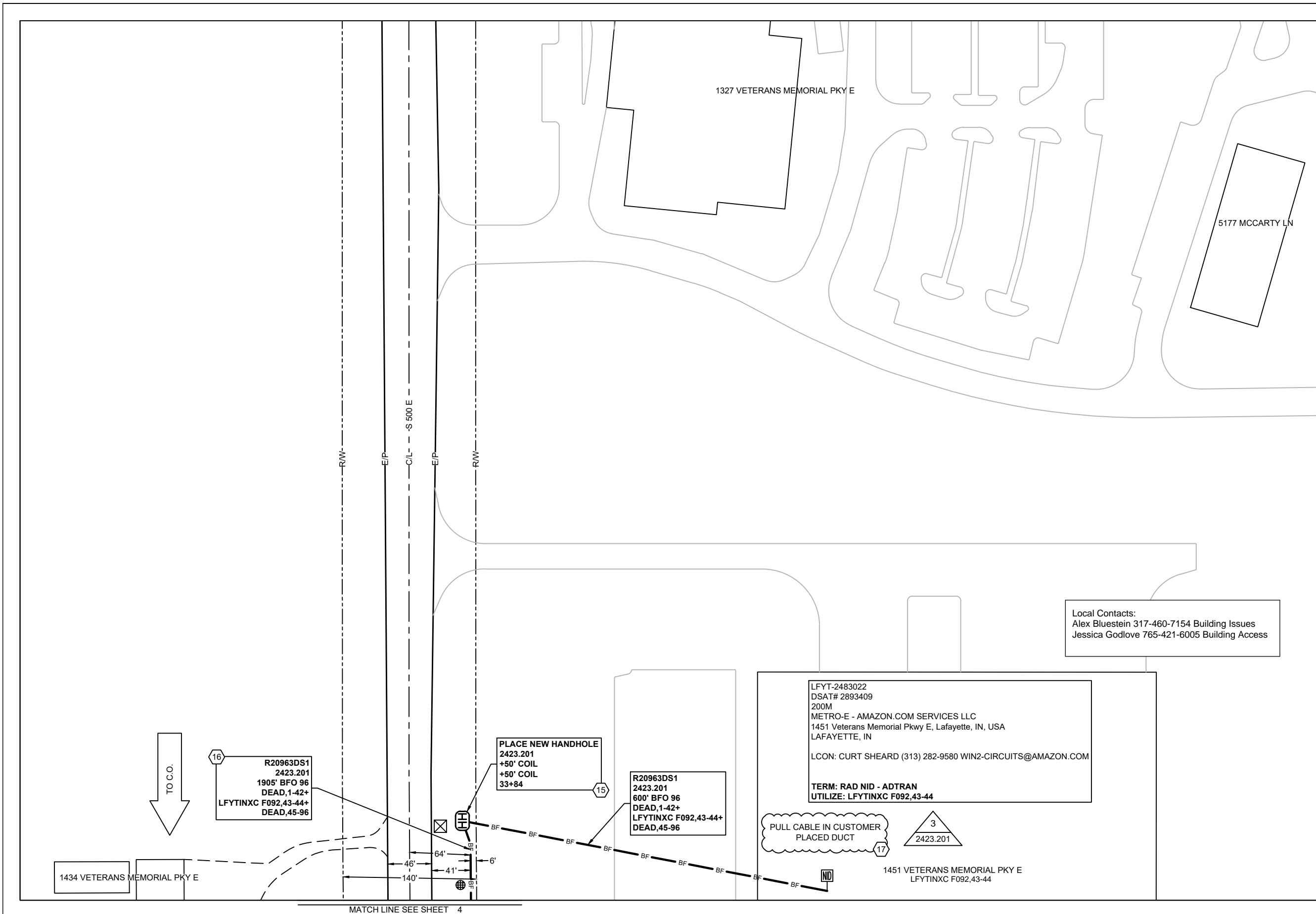


CONSTRUCTION NOTES

1. The exact location of facility placement will be determined after all underground utilities have been located. The preferred route is as close to the Right-of-Way line as possible. Right-of-Way data shown should be considered approximate and not guaranteed.
2. If dielectric fiber is placed, a locate wire must be placed along with the fiber.
3. Known utilities shown are for reference only. Actual utility locations must be determined by 811 prior to construction.
4. The construction area will be restored to the original condition or better.
5. All new handholes are required to be installed on a 6" base of pea gravel.
6. Any changes or deviations in proposed work must be approved by the designated Resident Engineer.



SHEET: 4 OF 5



1327 VETERANS MEMORIAL PKY E

5177 MCCARTY LN

1434 VETERANS MEMORIAL PKY E

LFYT-2483022
 DSAT# 2893409
 200M
 METRO-E - AMAZON.COM SERVICES LLC
 1451 Veterans Memorial Pkwy E, Lafayette, IN, USA
 LAFAYETTE, IN
 LCON: CURT SHEARD (313) 282-9580 WIN2-CIRCUITS@AMAZON.COM
 TERM: RAD NID - ADTRAN
 UTILIZE: LFYTINXC F092,43-44

Local Contacts:
 Alex Bluestein 317-460-7154 Building Issues
 Jessica Godlove 765-421-6005 Building Access

16
 R20963DS1
 2423.201
 1905' BFO 96
 DEAD,1-42+
 LFYTINXC F092,43-44+
 DEAD,45-96

PLACE NEW HANDHOLE
 2423.201
 +50' COIL
 +50' COIL
 33+84

15
 R20963DS1
 2423.201
 600' BFO 96
 DEAD,1-42+
 LFYTINXC F092,43-44+
 DEAD,45-96

PULL CABLE IN CUSTOMER
 PLACED DUCT

3
 2423.201

1451 VETERANS MEMORIAL PKY E
 LFYTINXC F092,43-44

MATCH LINE SEE SHEET 4

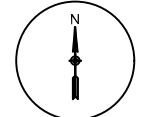


Yates Engineering Services, LLC
 2536 W Industrial Park Dr
 Suite 1
 Bloomington, IN 47404
 (812)333-7335

RETAIL-AMAZON.COM SERVICES LLC

WORK ORDER: 2483022 DATE: 7/12/2021
 DRAWN BY: YES STAKED BY: YES SCALE: 1:100
 COUNTY: TIPPECANOE CITY: LAFAYETTE
 ENGINEER: M. GIBSON PHONE: (812) 333-7335
 DRAFTER: KO C.O. AREA: LFYT EXCH. CODE: 50662

TWP: 23N
 RNG: 3W
 SEC: 31



CONSTRUCTION NOTES

1. The exact location of facility placement will be determined after all underground utilities have been located. The preferred route is as close to the Right-of-Way line as possible. Right-of-Way data shown should be considered approximate and not guaranteed.
2. If dielectric fiber is placed, a locate wire must be placed along with the fiber.
3. Known utilities shown are for reference only. Actual utility locations must be determined by 811 prior to construction.
4. The construction area will be restored to the original condition or better.
5. All new handholes are required to be installed on a 6" base of pea gravel.
6. Any changes or deviations in proposed work must be approved by the designated Resident Engineer.

