

9015

Hillspire

CLASSIC
COLLECTION

Main Level..... 1,636 Sq. Ft.
Basement Level 1,636 Sq. Ft.
TOTAL* **3,272 Sq. Ft.**



ClassicHomes.com

**Actual square footage may vary due to added options, chosen elevations, or amount of basement finish.*



Elevation B |

NOTES

Options chosen:

* Larger kitchen island with double-oven and cooktop

* 9-foot basement ceilings

* Air Conditioning

* side window in finished, insulated garage

* obscured glass in exterior windows located in bathrooms and showers

* Google smart home package (Nest Hub, Nest Mini, Google Puck (3), Nest thermostat, smart door lock and doorbell, smart garage door opener.

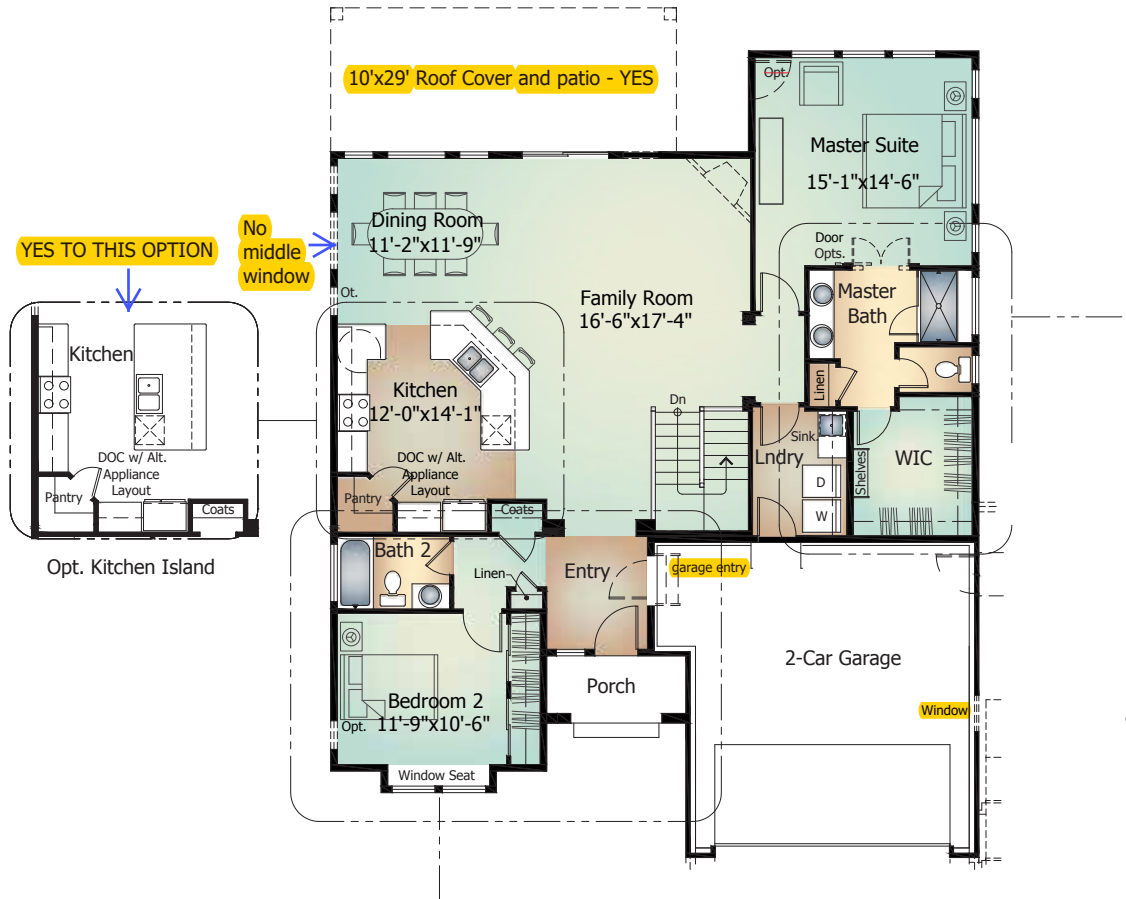
* active radon mitigation system with vent piping in basement

* continuous hot water circulation system to lessen water waste waiting for hot water at faucets

Main Level

HILLSPIRE Model 9015

'B' Elevation shown

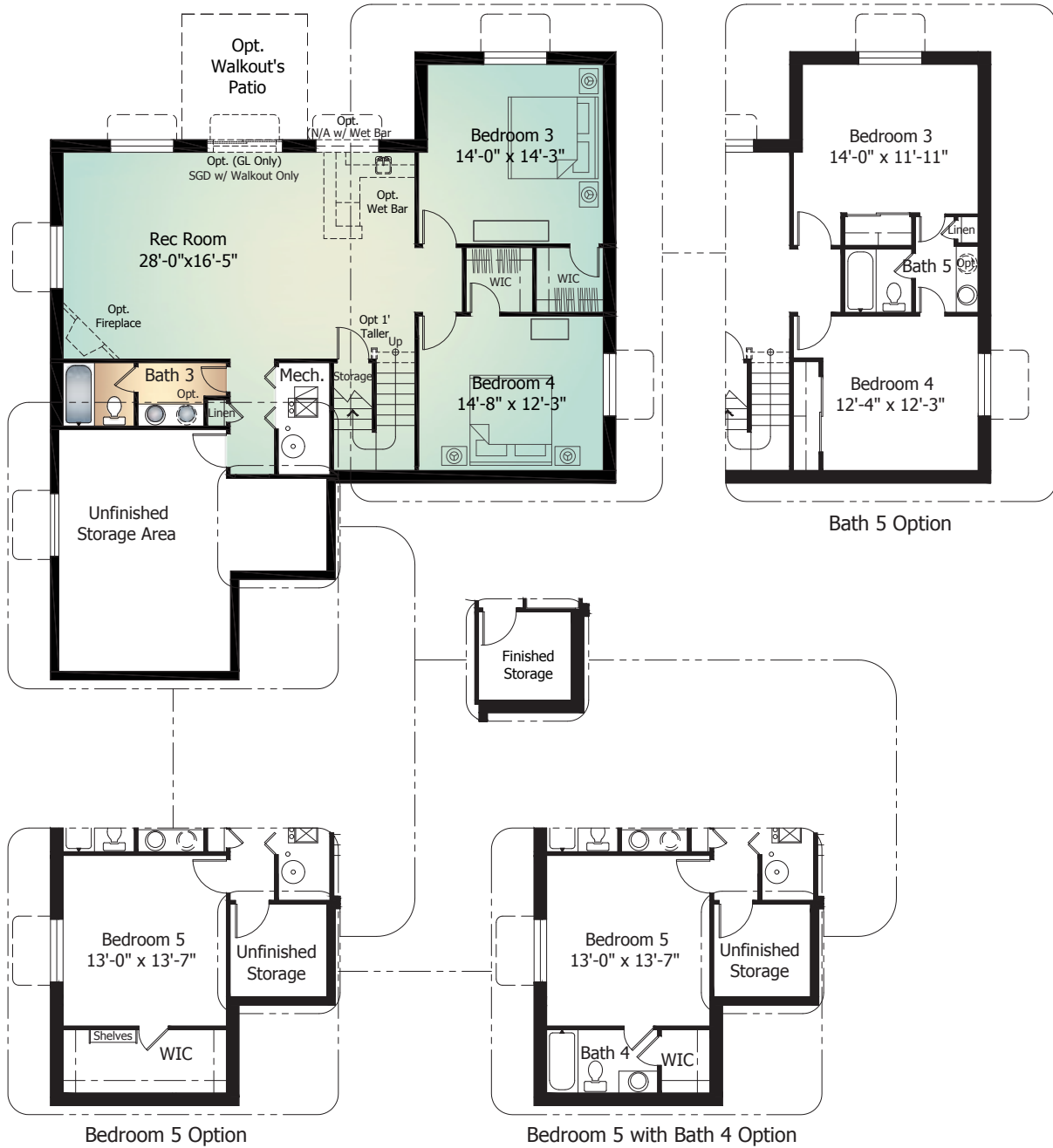


Basement Level

HILLSPIRE Model 9015 | with Optional Finish



We are leaving the basement unfinished with just rough in for bathroom



Optional Elevations

HILLSPIRE Model 9015



Artist's conception. All plans, landscaping, features and specifications are subject to change without notification. Measurements are approximate and may vary. Homes are built to blueprint specifications which must be referenced for specific measurements. This is a marketing document and not part of your home purchase contract.



June 8, 2021