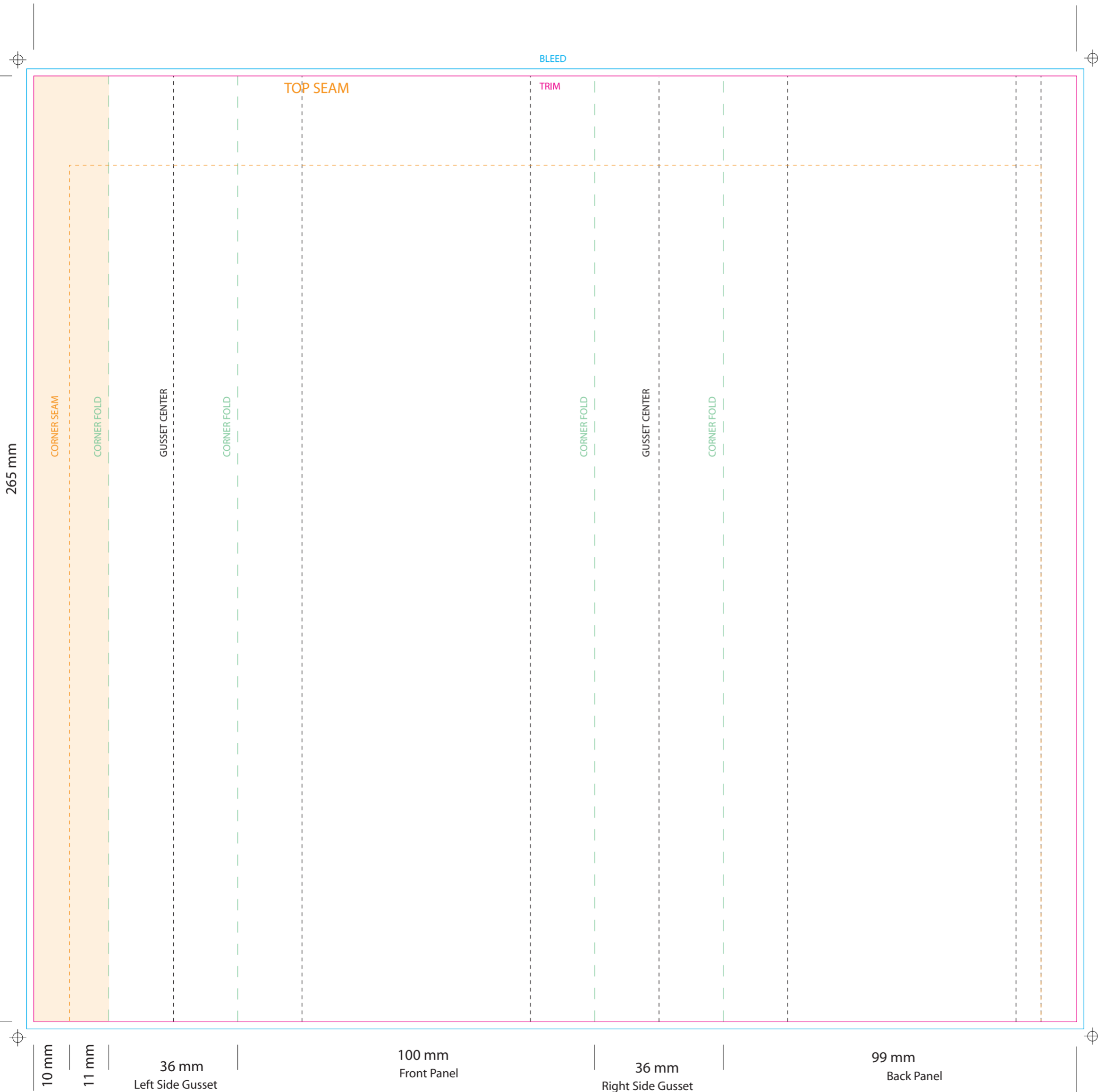


Darford Mega Cheese



100 × 265 × 36 SGOS
 100 mm × 265 mm × 36 mm
 (3.9" × 10.4" × 1.5" nominal)
Side Gusset Offset Seam
One Piece Construction
with Hanger Hole & Open Bottom

Overall Print

Bleed = Height 269 mm × Width 296 mm.

Trim = Height 265 mm × Width 292 mm.

Top Seam = 25 mm
 Corner Seam = 10 mm seam, 10 mm from RH edge of Back Face Panel.

** The print area covers the entire front, side and rear panels and it is generally preferable to stay within the noted side and bottom seam areas. See specific notes on areas where print will be obscured when bag is seamed or filled.*

Face Panels

Size = Height 265 mm × Width 100 mm.

** Note area at bottom of face and back panels. This area will be on bottom of bag when filled.*

Gusset Panels

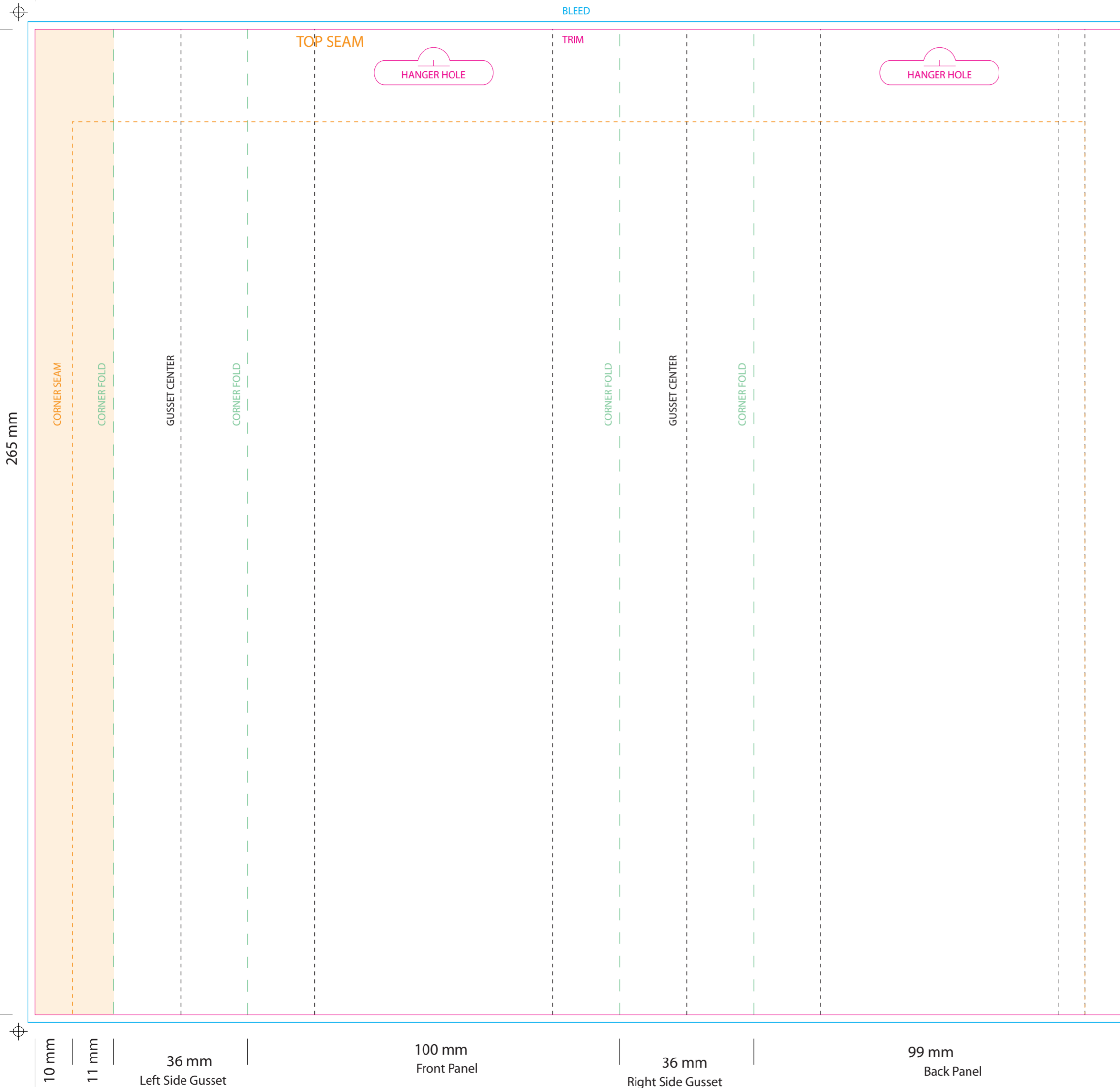
Size = Height 265 mm × Width 36 mm.

** Note area at bottom and top of panels. These area will be obscured when filled.*

Light orange area obscured when seam is folded flat, solid colour or background imagery only.

Darford Mega Bacon

C M Y K PMS 1795 PMS 4203 PMS 7499
Opaque White Window/No Ink MATT VARN



100 × 265 × 36 SGOS
 100 mm × 265 mm × 36 mm
 (3.9" × 10.4" × 1.5" nominal)
Side Gusset Offset Seam
One Piece Construction
with Hanger Hole & Open Bottom

Overall Print

Bleed = Height 269 mm × Width 296 mm.

Trim = Height 265 mm × Width 292 mm.

Top Seam = 25 mm
 Corner Seam = 10 mm seam, 10 mm from RH edge of Back Face Panel.

** The print area covers the entire front, side and rear panels and it is generally preferable to stay within the noted side and bottom seam areas. See specific notes on areas where print will be obscured when bag is seamed or filled.*

Face Panels

Size = Height 265 mm × Width 100 mm.

◆ Hanger Hole = 10 mm from top trim line
 Height 10 mm × Width 20 mm.

** Note area at bottom of face and back panels. This area will be on bottom of bag when filled.*

Gusset Panels

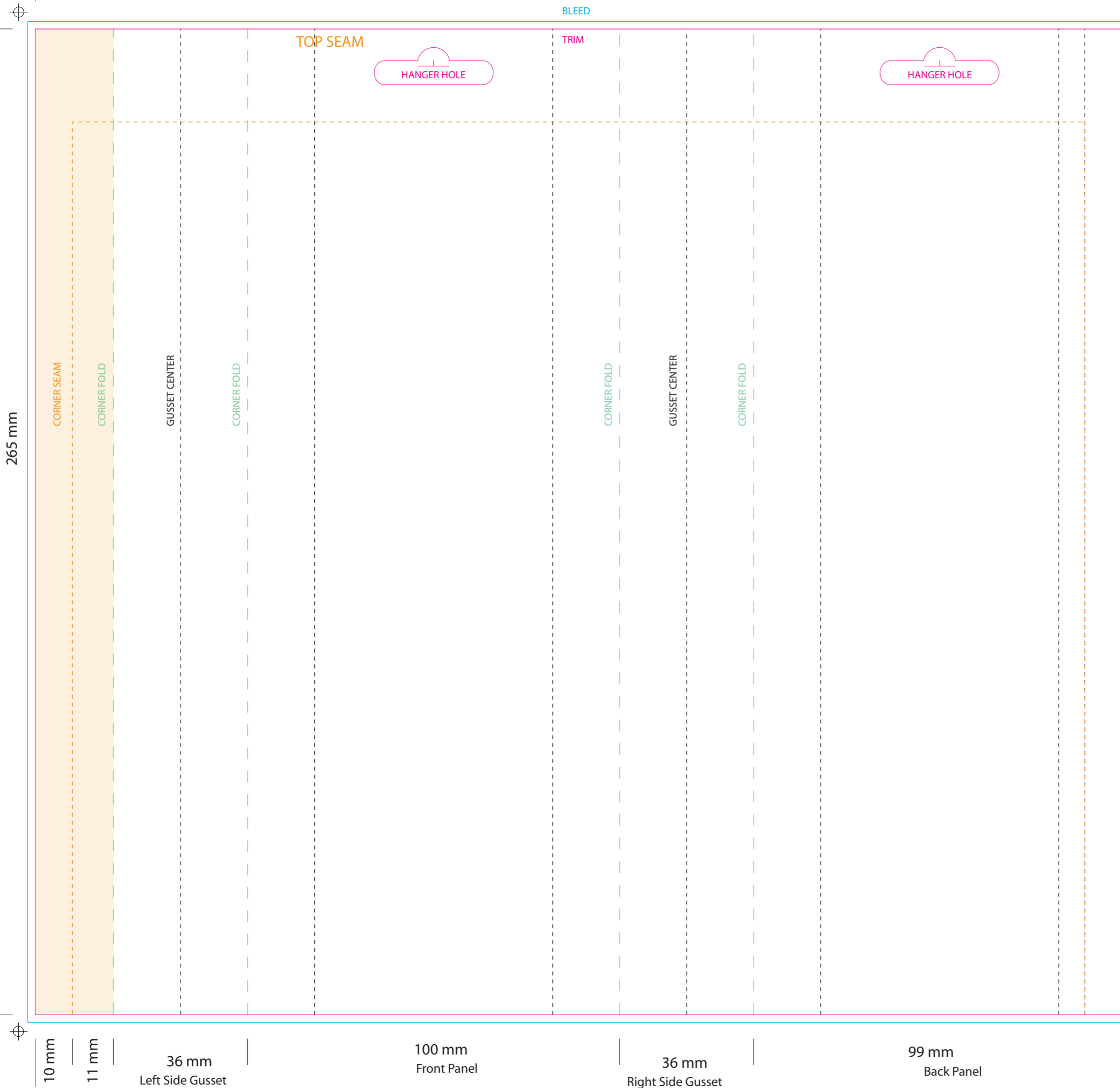
Size = Height 265 mm × Width 36 mm.

** Note area at bottom and top of panels. These area will be obscured when filled.*

Light orange area obscured when seam is folded flat, solid colour or background imagery only.

Darford Mega Pumpkin

C M Y K PMS 2018 PMS 4203 PMS 7499
Opaque White Window/No Ink MATT VARN



100 × 265 × 36 SGOS
 100 mm × 265 mm × 36 mm
 (3.9" × 10.4" × 1.5" nominal)
Side Gusset Offset Seam
One Piece Construction
with Hanger Hole & Open Bottom

Overall Print

Bleed = Height 269 mm × Width 296 mm.

Trim = Height 265 mm × Width 292 mm.

Top Seam = 25 mm
 Corner Seam = 10 mm seam, 10 mm from RH edge of Back Face Panel.

** The print area covers the entire front, side and rear panels and it is generally preferable to stay within the noted side and bottom seam areas. See specific notes on areas where print will be obscured when bag is seamed or filled.*

Face Panels

Size = Height 265 mm × Width 100 mm.

◆ Hanger Hole = 10 mm from top trim line
 Height 10 mm × Width 20 mm.

** Note area at bottom of face and back panels. This area will be on bottom of bag when filled.*

Gusset Panels

Size = Height 265 mm × Width 36 mm.

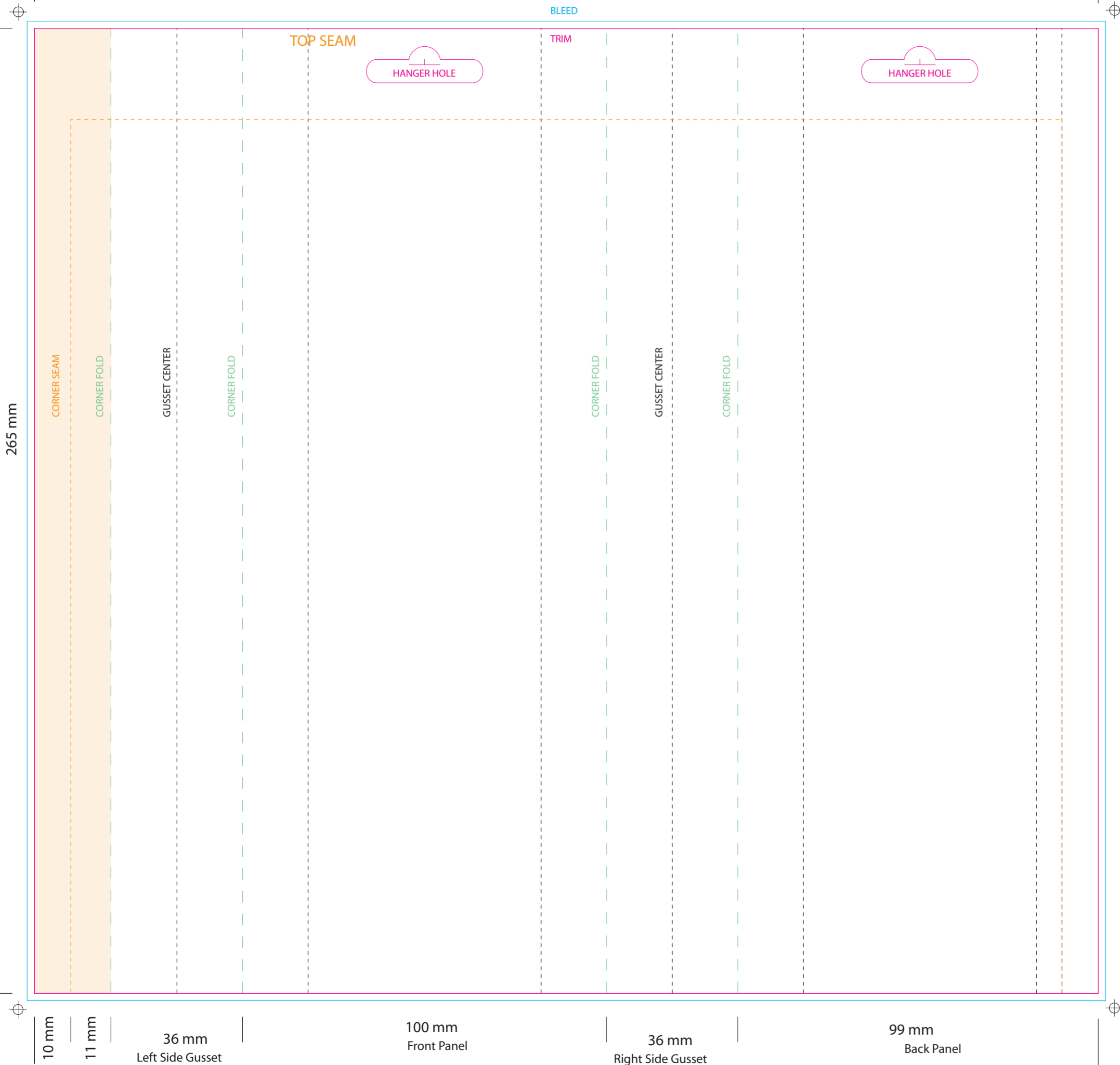
** Note area at bottom and top of panels. These area will be obscured when filled.*

10 mm | 11 mm | 36 mm Left Side Gusset | 100 mm Front Panel | 36 mm Right Side Gusset | 99 mm Back Panel

Light orange area obscured when seam is folded flat, solid colour or background imagery only.

Darford Mega P'Nut

C M Y K PMS 7508 PMS 4203 PMS 7499
Opaque White Window/No Ink MATT VARN



100 × 265 × 36 SGOS
 100 mm × 265 mm × 36 mm
 (3.9" × 10.4" × 1.5" nominal)
Side Gusset Offset Seam
One Piece Construction
with Hanger Hole & Open Bottom

Overall Print

Bleed = Height 269 mm × Width 296 mm.

Trim = Height 265 mm × Width 292 mm.

Top Seam = 25 mm
 Corner Seam = 10 mm seam, 10 mm from RH edge of Back Face Panel.

** The print area covers the entire front, side and rear panels and it is generally preferable to stay within the noted side and bottom seam areas. See specific notes on areas where print will be obscured when bag is seamed or filled.*

Face Panels

Size = Height 265 mm × Width 100 mm.

◆ Hanger Hole = 10 mm from top trim line
 Height 10 mm × Width 20 mm.

** Note area at bottom of face and back panels. This area will be on bottom of bag when filled.*

Gusset Panels

Size = Height 265 mm × Width 36 mm.

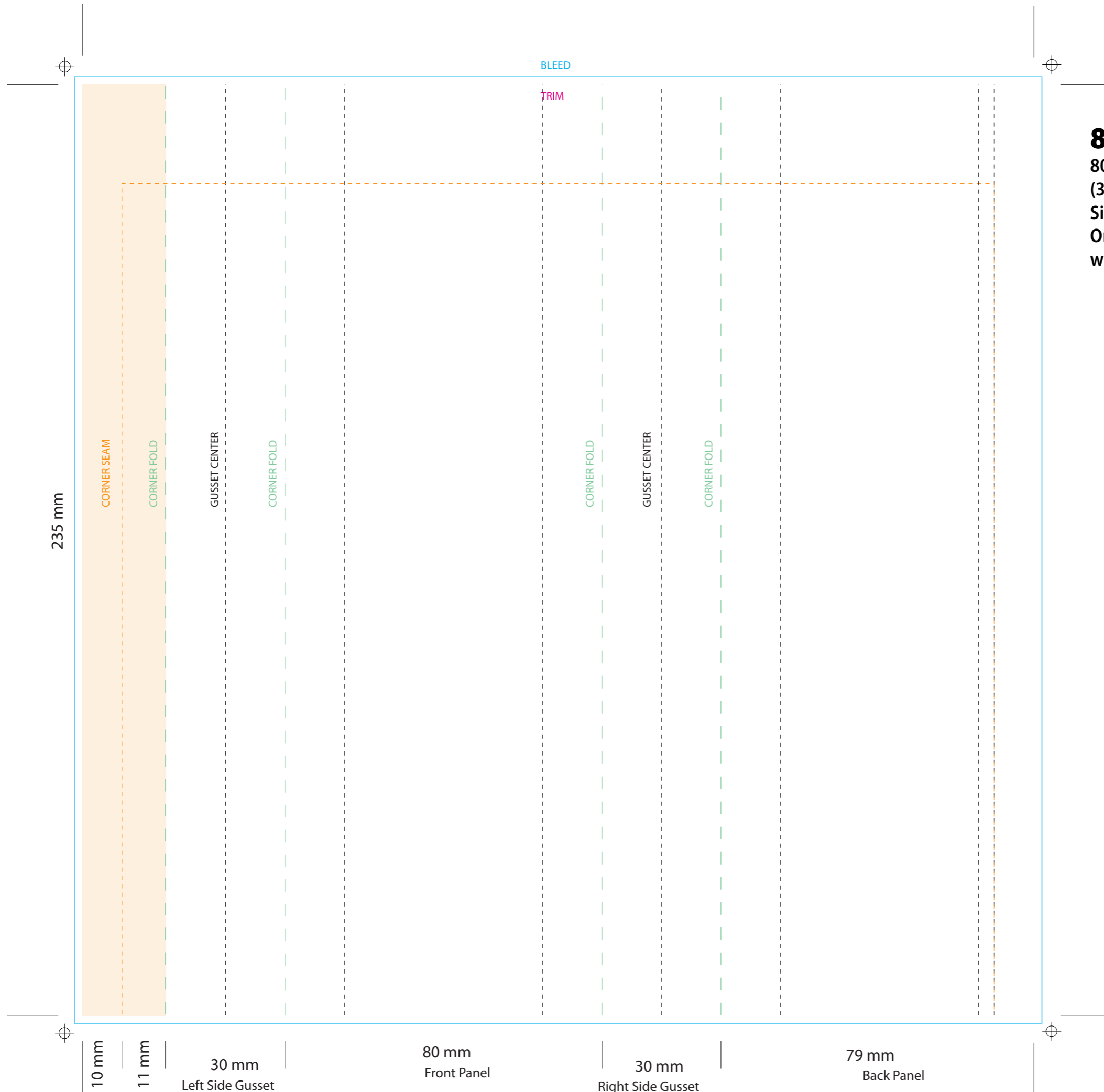
** Note area at bottom and top of panels. These area will be obscured when filled.*

10 mm | 11 mm | 36 mm Left Side Gusset | 100 mm Front Panel | 36 mm Right Side Gusset | 99 mm Back Panel

Light orange area obscured when seam is folded flat, solid colour or background imagery only.

Darford Mega Cheese Jr

C	M	Y	K	PMS 3514
Opaque White		Window/No Ink	PMS 4203	
		MATT VARN		
			PMS 7499	



80 × 235 × 30 SGOS
 80 mm × 235 mm × 30 mm
 (3.15" × 9.25" × 1.2" nominal)
 Side Gusset Offset Seam
 One Piece Construction
 with Hanger Hole & Open Bottom

Overall Print

Bleed = Height 239 mm × Width 244 mm.

Trim = Height 235 mm × Width 240 mm.

Top Seam = 25 mm
 Corner Seam = 10 mm seam, 10 mm from RH edge of Back Face Panel.

** The print area covers the entire front, side and rear panels and it is generally preferable to stay within the noted side and bottom seam areas. See specific notes on areas where print will be obscured when bag is seamed or filled.*

Face Panels

Size = Height 235 mm × Width 80 mm.

** Note area at bottom of face and back panels. This area will be on bottom of bag when filled.*

Gusset Panels

Size = Height 235 mm × Width 30 mm.

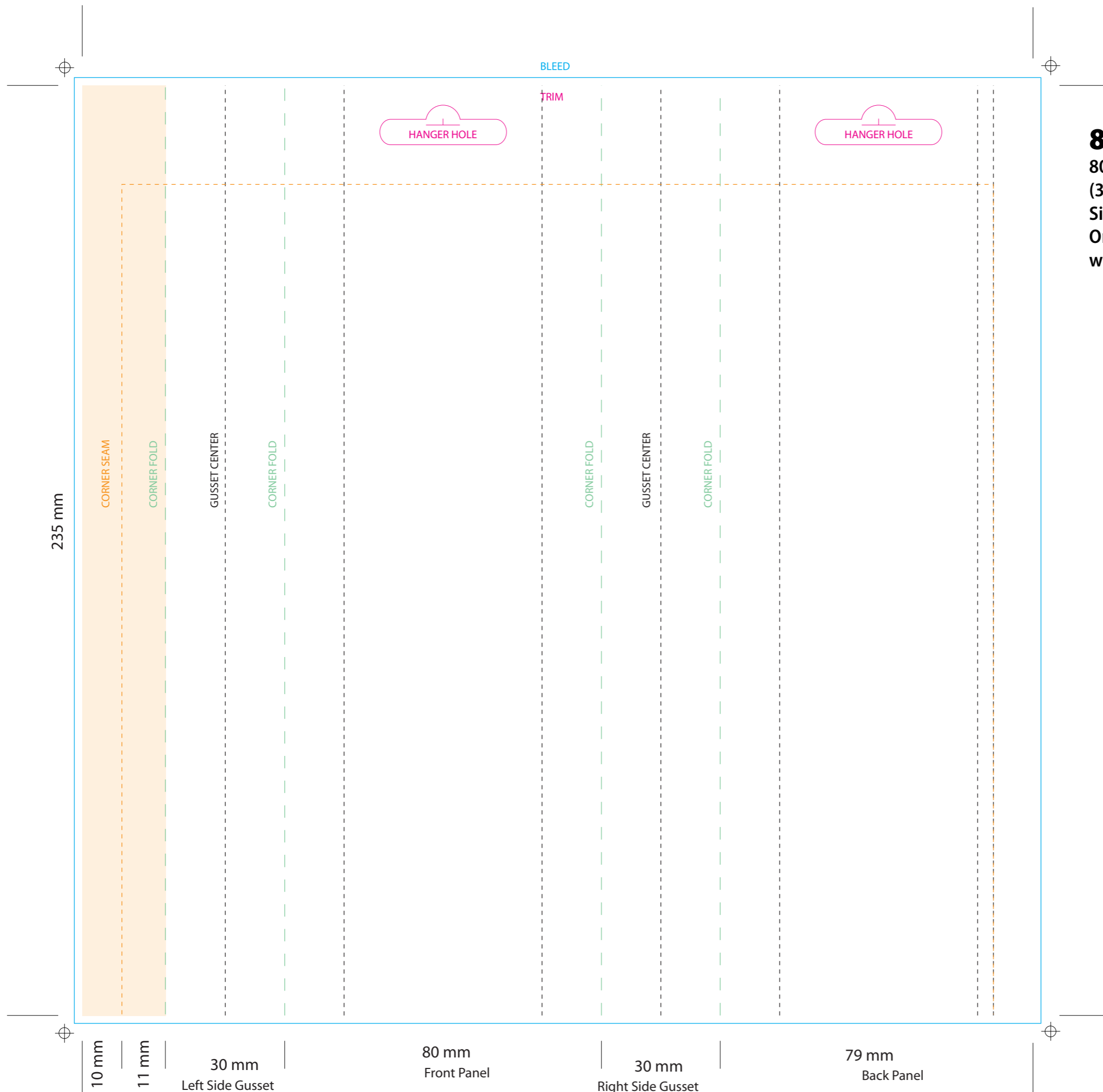
** Note area at bottom and top of panels. These area will be obscured when filled.*

Calorie Content (ME Calculated) 3,085 kcal/kg or 409 kcal/treat
Contenu calorique (ÉM calculée) 3085 kcal/kg ou 409 kcal/biscuit

Light orange area obscured when seam is folded flat, solid colour or background imagery only.

Darford Mega Bacon Jr

C	M	Y	K	PMS 1795
Opaque White	Window/No Ink	MATT VARN	PMS 4203	
				PMS 7499



80 × 235 × 30 SGOS
 80 mm × 235 mm × 30 mm
 (3.15" × 9.25" × 1.2" nominal)
 Side Gusset Offset Seam
 One Piece Construction
 with Hanger Hole & Open Bottom

Overall Print

- Bleed = Height 239 mm × Width 244 mm.
- Trim = Height 235 mm × Width 240 mm.
- Top Seam = 25 mm
- Corner Seam = 10 mm seam, 10 mm from RH edge of Back Face Panel.
- * The print area covers the entire front, side and rear panels and it is generally preferable to stay within the noted side and bottom seam areas. See specific notes on areas where print will be obscured when bag is seamed or filled.*

Face Panels

- Size = Height 235 mm × Width 80 mm.
- ◆ Hanger Hole = 10 mm from top trim line
Height 10 mm × Width 20 mm.
- * Note area at bottom of face and back panels. This area will be on bottom of bag when filled.*

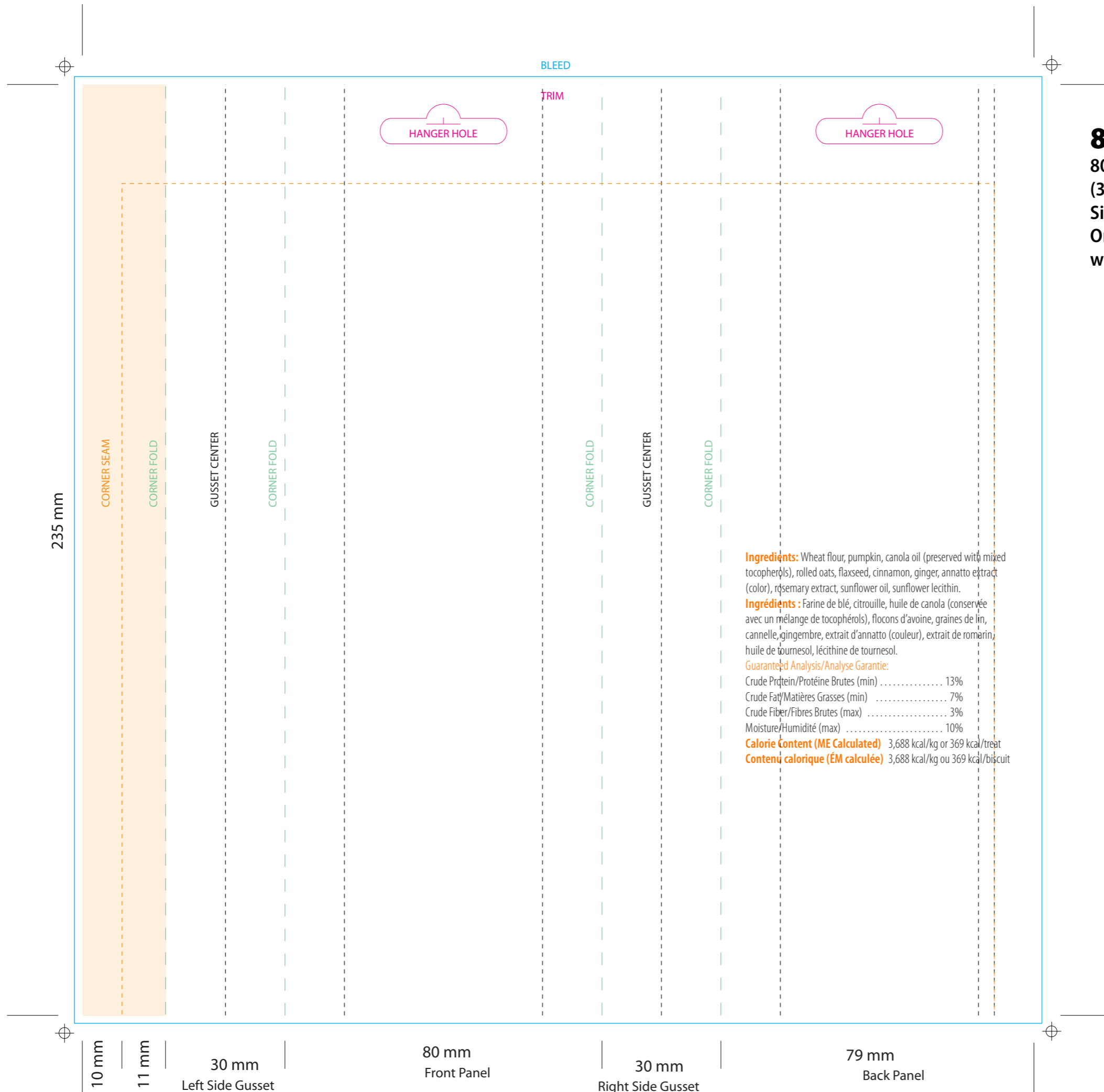
Gusset Panels

- Size = Height 235 mm × Width 30 mm.
- * Note area at bottom and top of panels. These area will be obscured when filled.*

Light orange area obscured when seam is folded flat, solid colour or background imagery only.

Darford Mega Pumpkin Jr

C	M	Y	K	PMS 2018
Opaque White		Window/No Ink		PMS 4203
MATT VARN				
PMS 7499				



80 × 235 × 30 SGOS
 80 mm × 235 mm × 30 mm
 (3.15" × 9.25" × 1.2" nominal)
 Side Gusset Offset Seam
 One Piece Construction
 with Hanger Hole & Open Bottom

Overall Print

Bleed = Height 239 mm × Width 244 mm.

Trim = Height 235 mm × Width 240 mm.

Top Seam = 25 mm
 Corner Seam = 10 mm seam, 10 mm from RH edge of Back Face Panel.

** The print area covers the entire front, side and rear panels and it is generally preferable to stay within the noted side and bottom seam areas. See specific notes on areas where print will be obscured when bag is seamed or filled.*

Ingredients: Wheat flour, pumpkin, canola oil (preserved with mixed tocopherols), rolled oats, flaxseed, cinnamon, ginger, annatto extract (color), rosemary extract, sunflower oil, sunflower lecithin.

Ingrediènts : Farine de blé, citrouille, huile de canola (conservée avec un mélange de tocophérols), flocons d'avoine, graines de lin, cannelle, gingembre, extrait d'annatto (couleur), extrait de romarin, huile de tournesol, lécithine de tournesol.

Guaranteed Analysis/Analyse Garantie:

Crude Protein/Protéine Brutes (min)	13%
Crude Fat/Matières Grasses (min)	7%
Crude Fiber/Fibres Brutes (max)	3%
Moisture/Humidité (max)	10%

Calorie Content (ME Calculated) 3,688 kcal/kg or 369 kcal/treat
Contenu calorique (EM calculée) 3,688 kcal/kg ou 369 kcal/biscuit

Face Panels

Size = Height 235 mm × Width 80 mm.

◆ Hanger Hole = 10 mm from top trim line
 Height 10 mm × Width 20 mm.

** Note area at bottom of face and back panels. This area will be on bottom of bag when filled.*

Gusset Panels

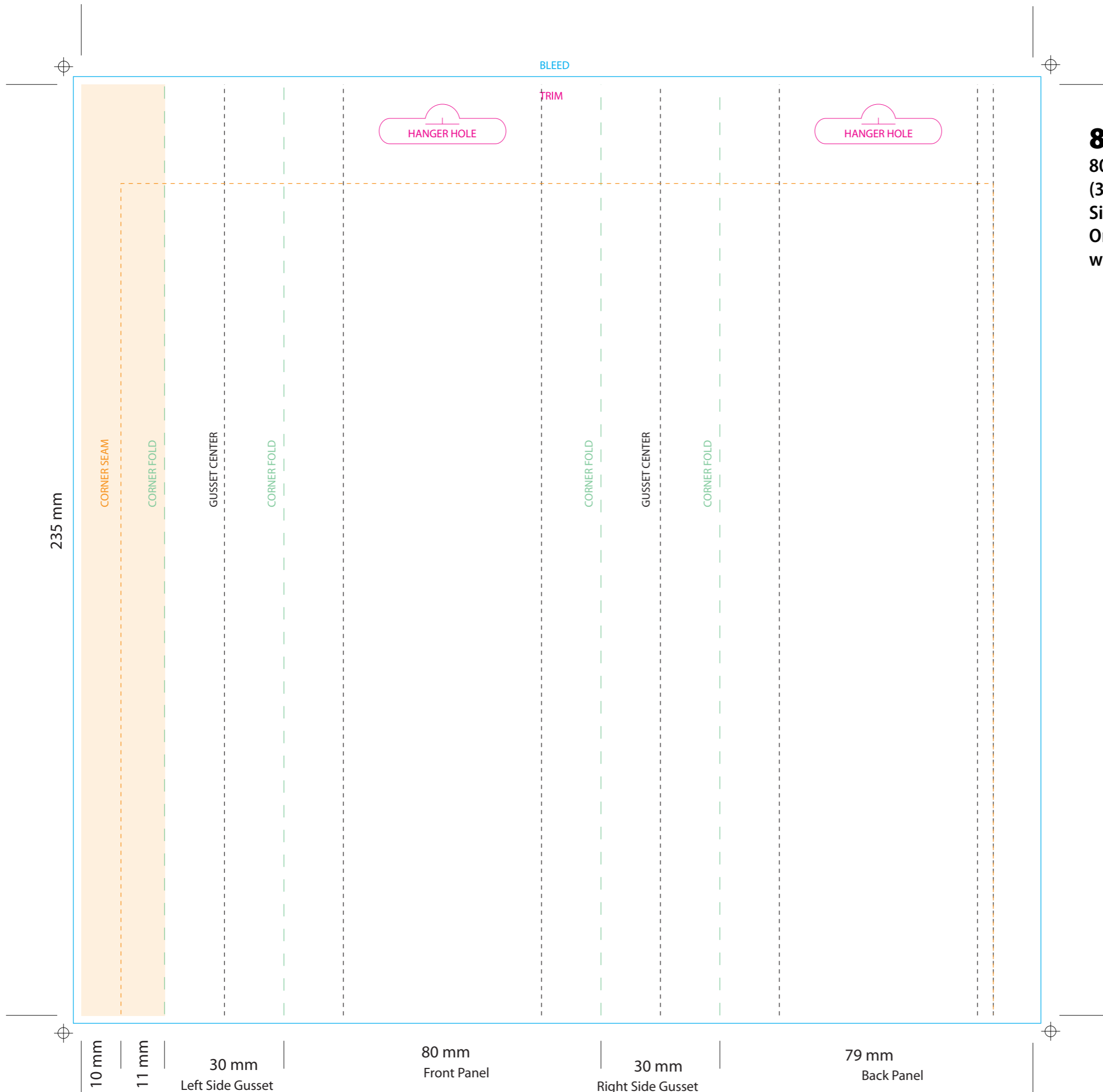
Size = Height 235 mm × Width 30 mm.

** Note area at bottom and top of panels. These area will be obscured when filled.*

Light orange area obscured when seam is folded flat, solid colour or background imagery only.

Darford Mega P'Nut Jr

C	M	Y	K	PMS 7508
Opaque White	Window/No Ink	MATT VARN	PMS 4203	
				PMS 7499



80 × 235 × 30 SGOS
 80 mm × 235 mm × 30 mm
 (3.15" × 9.25" × 1.2" nominal)
 Side Gusset Offset Seam
 One Piece Construction
 with Hanger Hole & Open Bottom

Overall Print

- Bleed = Height 239 mm × Width 244 mm.
- Trim = Height 235 mm × Width 240 mm.
- Top Seam = 25 mm
- Corner Seam = 10 mm seam, 10 mm from RH edge of Back Face Panel.
- * The print area covers the entire front, side and rear panels and it is generally preferable to stay within the noted side and bottom seam areas. See specific notes on areas where print will be obscured when bag is seamed or filled.

Face Panels

- Size = Height 235 mm × Width 80 mm.
- ◆ Hanger Hole = 10 mm from top trim line
Height 10 mm × Width 20 mm.
- * Note area at bottom of face and back panels. This area will be on bottom of bag when filled.

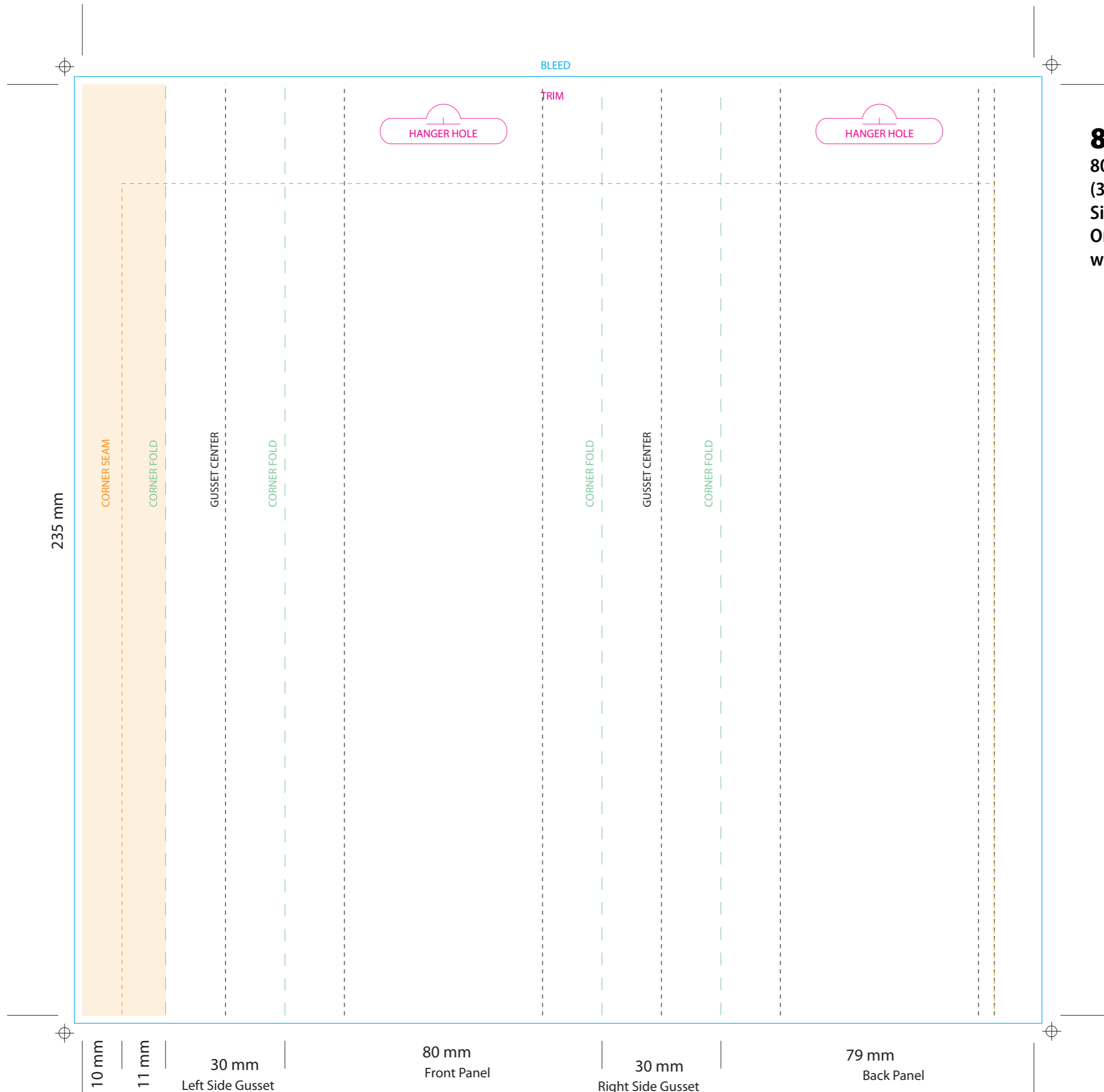
Gusset Panels

- Size = Height 235 mm × Width 30 mm.
- * Note area at bottom and top of panels. These area will be obscured when filled.

Light orange area obscured when seam is folded flat, solid colour or background imagery only.

Darford Mega Breathbeater Jr

C	M	Y	K	PMS 7479
Opaque White		Window/No Ink		PMS 4203
		MATT VARN		
				PMS 7499



80 × 235 × 30 SGOS
 80 mm × 235 mm × 30 mm
 (3.15" × 9.25" × 1.2" nominal)
 Side Gusset Offset Seam
 One Piece Construction
 with Hanger Hole & Open Bottom

Overall Print

Bleed = Height 239 mm × Width 244 mm.

Trim = Height 235 mm × Width 240 mm.

Top Seam = 25 mm
 Corner Seam = 10 mm seam, 10 mm from
 RH edge of Back Face Panel.

** The print area covers the entire front, side and rear panels and it is generally preferable to stay within the noted side and bottom seam areas. See specific notes on areas where print will be obscured when bag is seamed or filled.*

Face Panels

Size = Height 235 mm × Width 80 mm.

◆ Hanger Hole = 10 mm from top trim line
 Height 10 mm × Width 20 mm.

** Note area at bottom of face and back panels. This area will be on bottom of bag when filled.*

Gusset Panels

Size = Height 235 mm × Width 30 mm.

** Note area at bottom and top of panels. These area will be obscured when filled.*

Light orange area obscured when seam is folded flat, solid colour or background imagery only.