



SOFT AUTUMN

SEASONAL COLOR GUIDE

stacey herndon
RADIANTLY DRESSED

WALLET SWATCH CARD

Below you'll find a swatch card that corresponds with the entire palette for Soft Autumn.

You can print this and keep it in your wallet as it's the size of a credit card.

For best use, print on cardstock, cut along exterior dotted lines, fold in half, and laminate.



SPRING

MELON	MAUVE	SEAFOAM
CELESTE	MINT	TAFFY

SUMMER

ROUGE	CORNFLOWER	SOFT RED
EMERALD	IRIS	MORNING BLUE

WINTER

BOYSENBERRY	SEAWEED	BRICK RED
PLUM	RAINFOREST	MIDNIGHT



SOFT AUTUMN

Warm & Soft

Soft Autumn is WARM (hue).

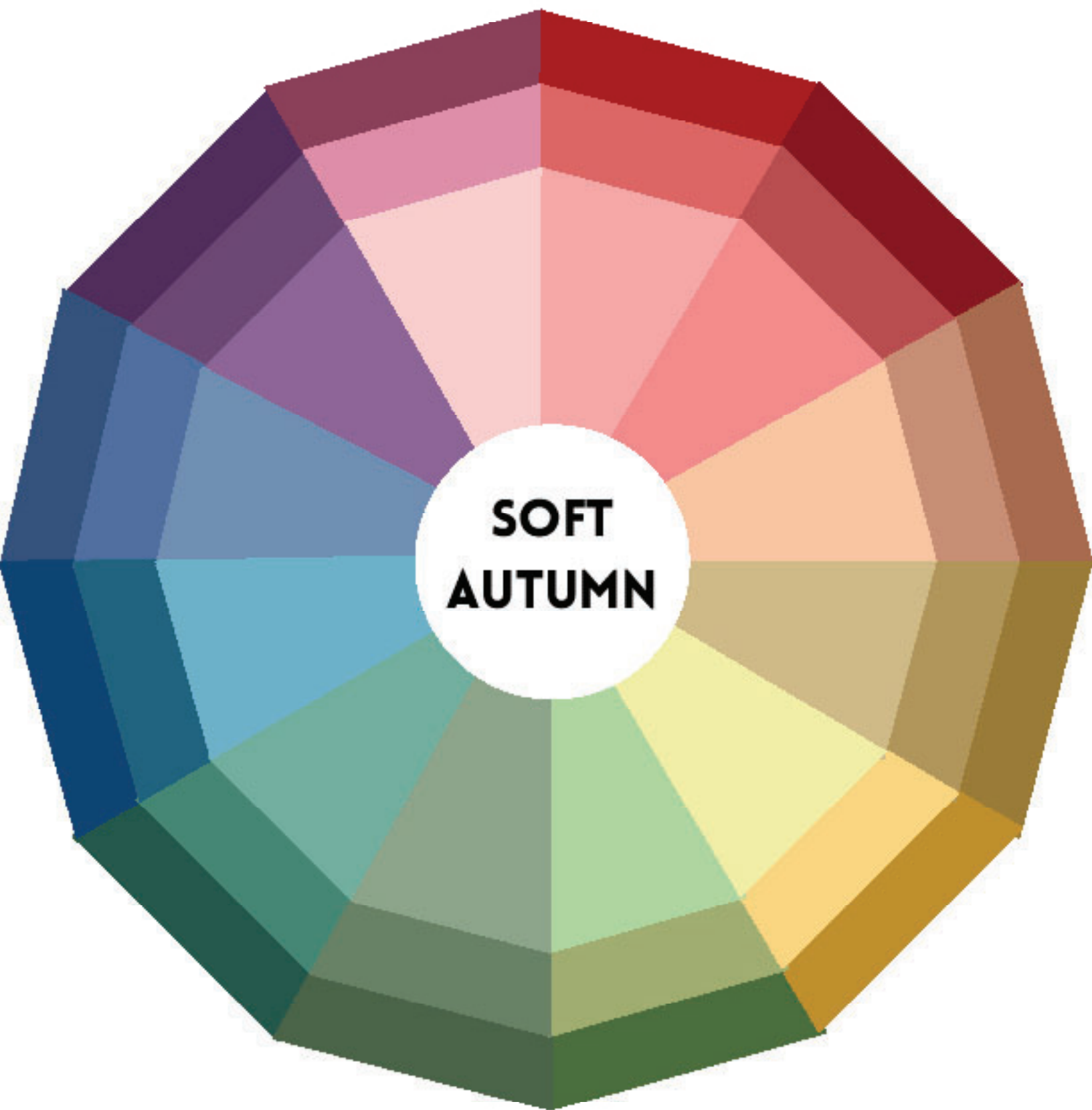
Soft Autumn sits next to summer and is typically warm/neutral. Because of the cool influence, there are varying levels of neutrality. Soft Autumn has an underlying red undertone that looks better in warm toned colors.

Soft Autumn is MEDIUM (value).

On the spectrum of light to dark, Soft Autumn lies in the middle. The best type of colors for Soft Autumn are medium to dark value.

Soft Autumn is MUTED (chroma).

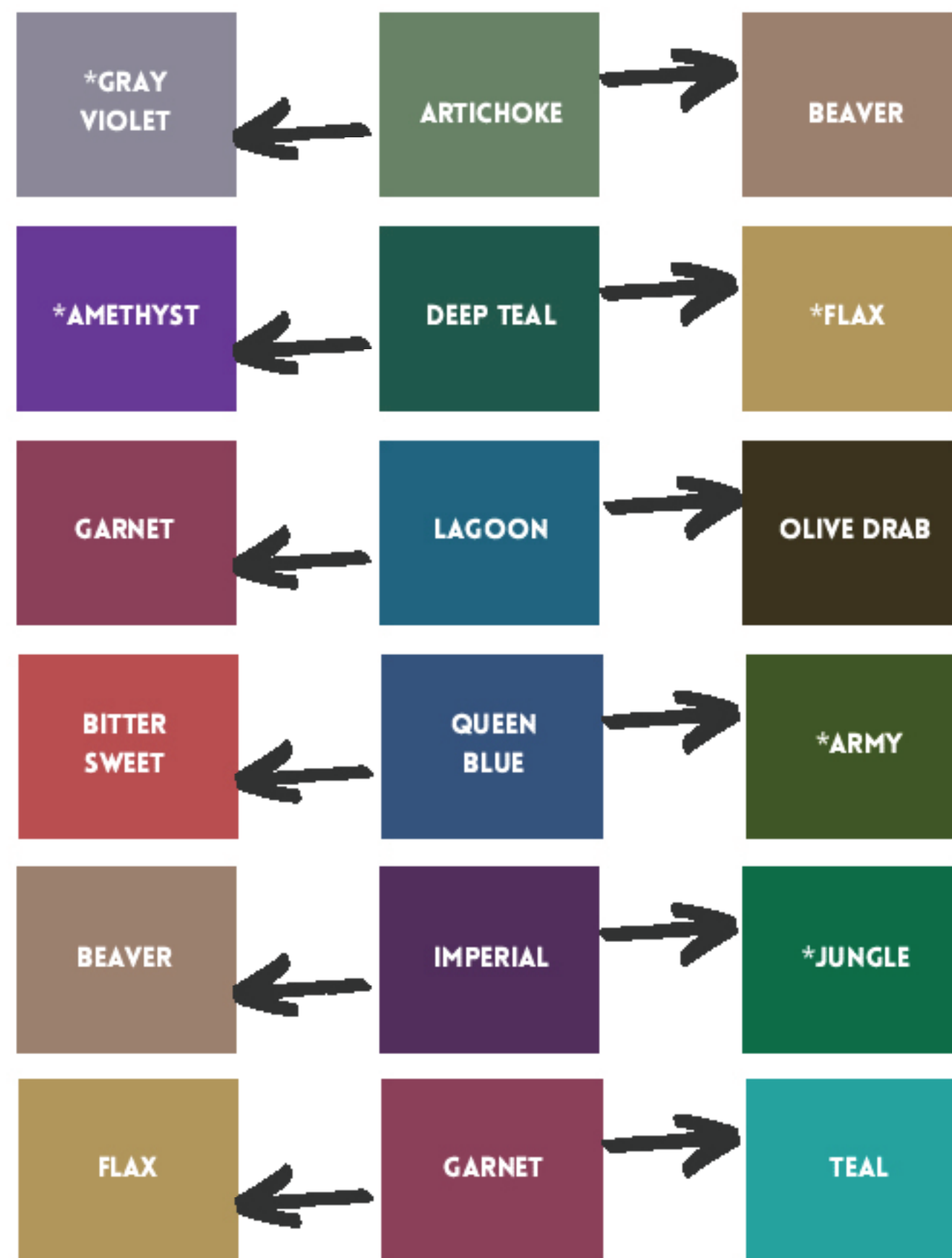
Soft Autumn is very muted on the chroma scale, having low contrast and saturation. It is one of the pair of most muted seasons.



*not an actual Munsell color wheel

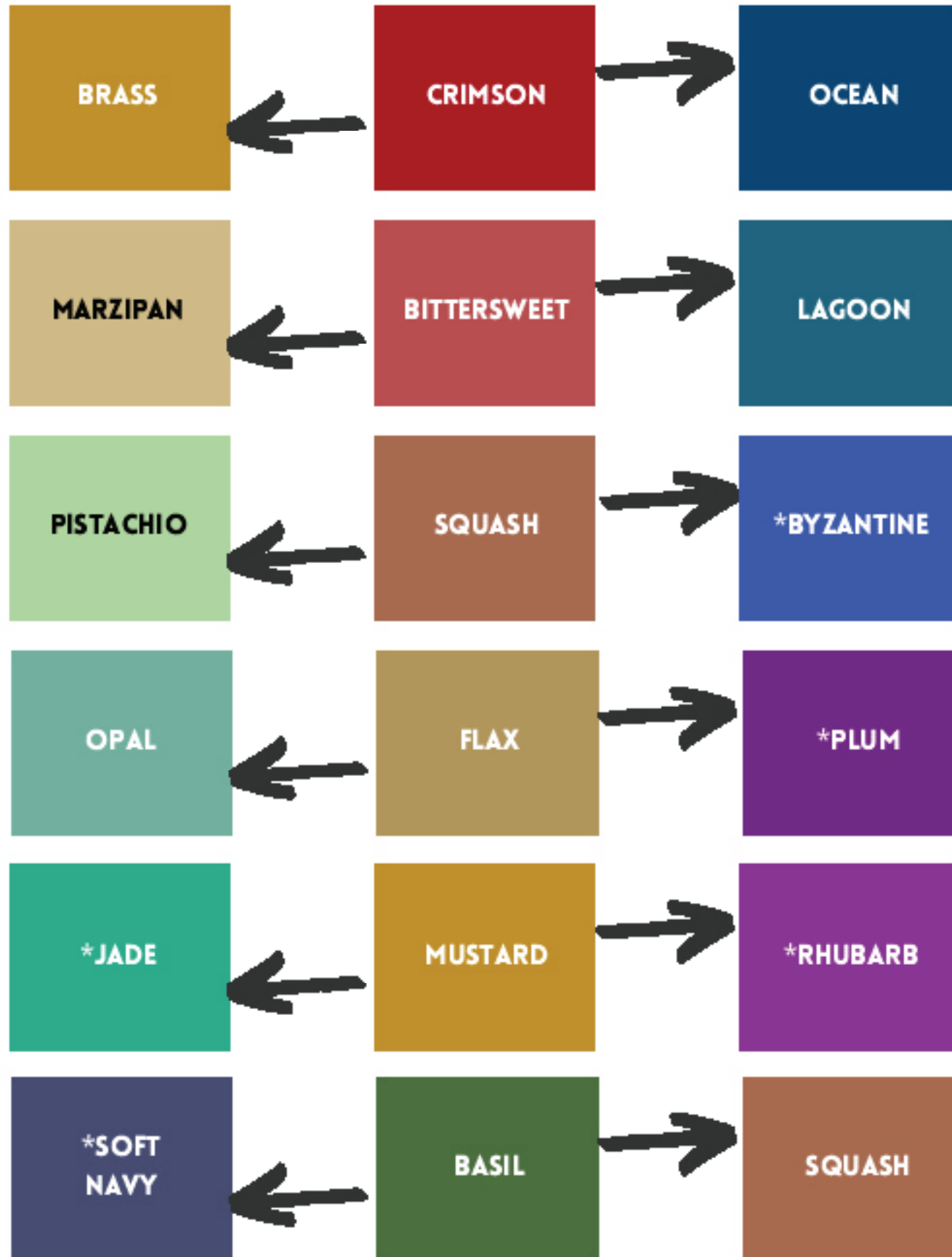
TRIAD COLORS

Starred colors are not soft autumn and should be adopted carefully.



TRIAD COLORS

Starred colors are not soft autumn and should be adopted carefully.



DARK NEUTRALS



ESPRESSO

SIENNA

CAFE NOIR

OLIVE DRAB

MEDIUM NEUTRALS



TAUPE

BEAVER

TAN

KHAKI

LIGHT NEUTRALS



SOFT
WHITE

IVORY

ALABASTER

CREAM

SOFT AUTUMN COLORS



COMPLEMENTARY COLORS

Starred colors are not soft autumn and should be adopted carefully.



COMPLEMENTARY COLORS

Starred colors are not soft autumn and should be adopted carefully.

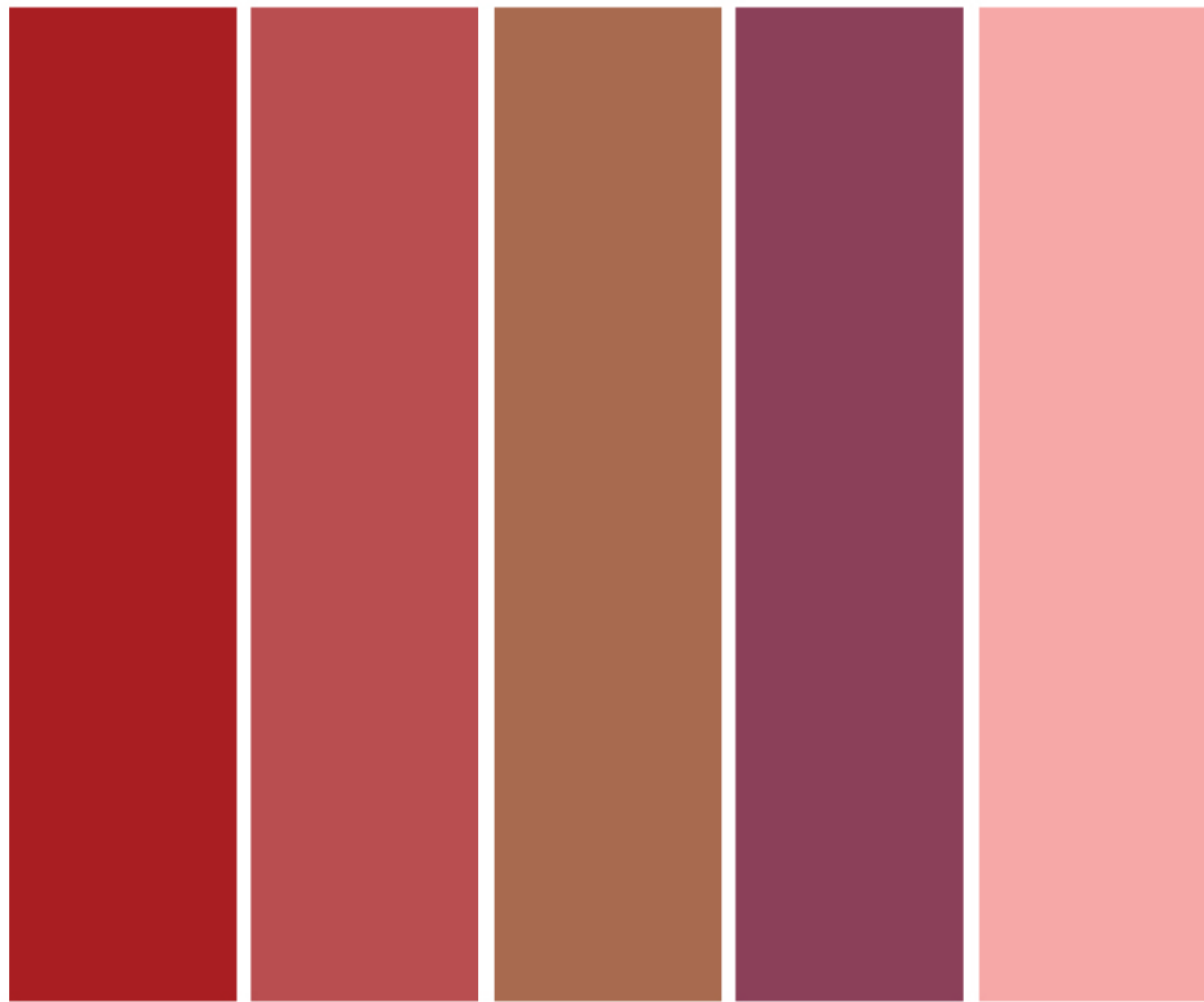
CRIMSON	*VERDUN
BITTERSWEET	*JADE
SQUASH	DEEP TEAL
FLAX	QUEEN BLUE
MUSTARD	OCEAN
BASIL	*MULBERRY

SOFT WHITE	IVORY
ALABASTER	CREAM

YOUR LIGHT NEUTRALS BRING OUT THE GLOW OF YOUR SKIN.

These colors:

- Reveal your honest self.
- Make you appear open and honest.
- Great for intimate conversations.
- Wear it to create a sense of peace.



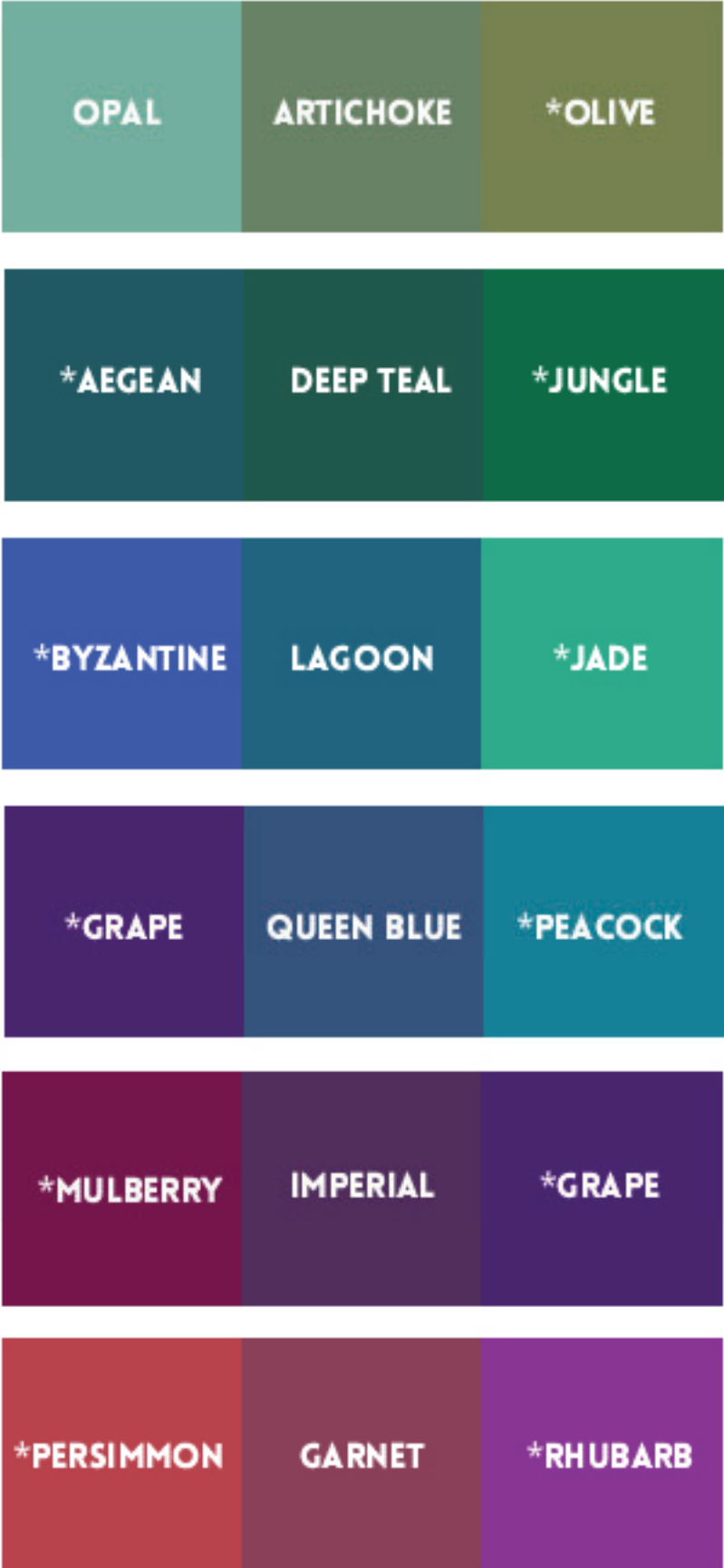
YOUR LOVE COLORS ARE THOSE BROUGHT ABOUT WHEN YOUR SKIN IS FLUSHED.

These colors:

- Reveal your passionate side.
- Make you appear exciting and daring.
- Great for romantic outings.
- Wear it to create a sense of urgency.

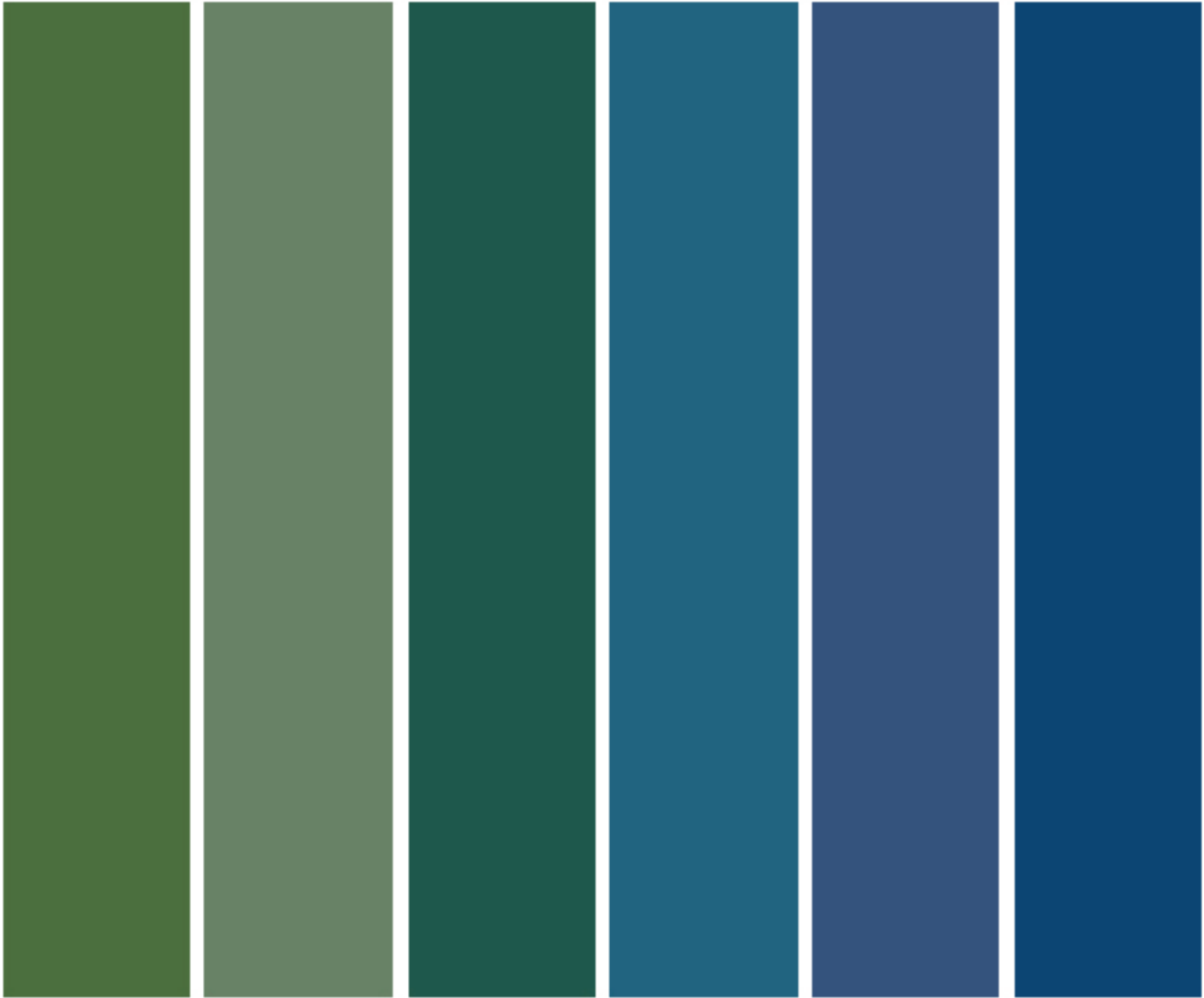
ANALOGOUS COLORS

Starred colors are not soft autumn and should be adopted carefully.



ANALOGOUS COLORS

Starred colors are not soft autumn and should be adopted carefully.



YOUR ILLUMINATE COLORS BRING OUT THE DEPTHS OF YOUR EYES.

These colors:

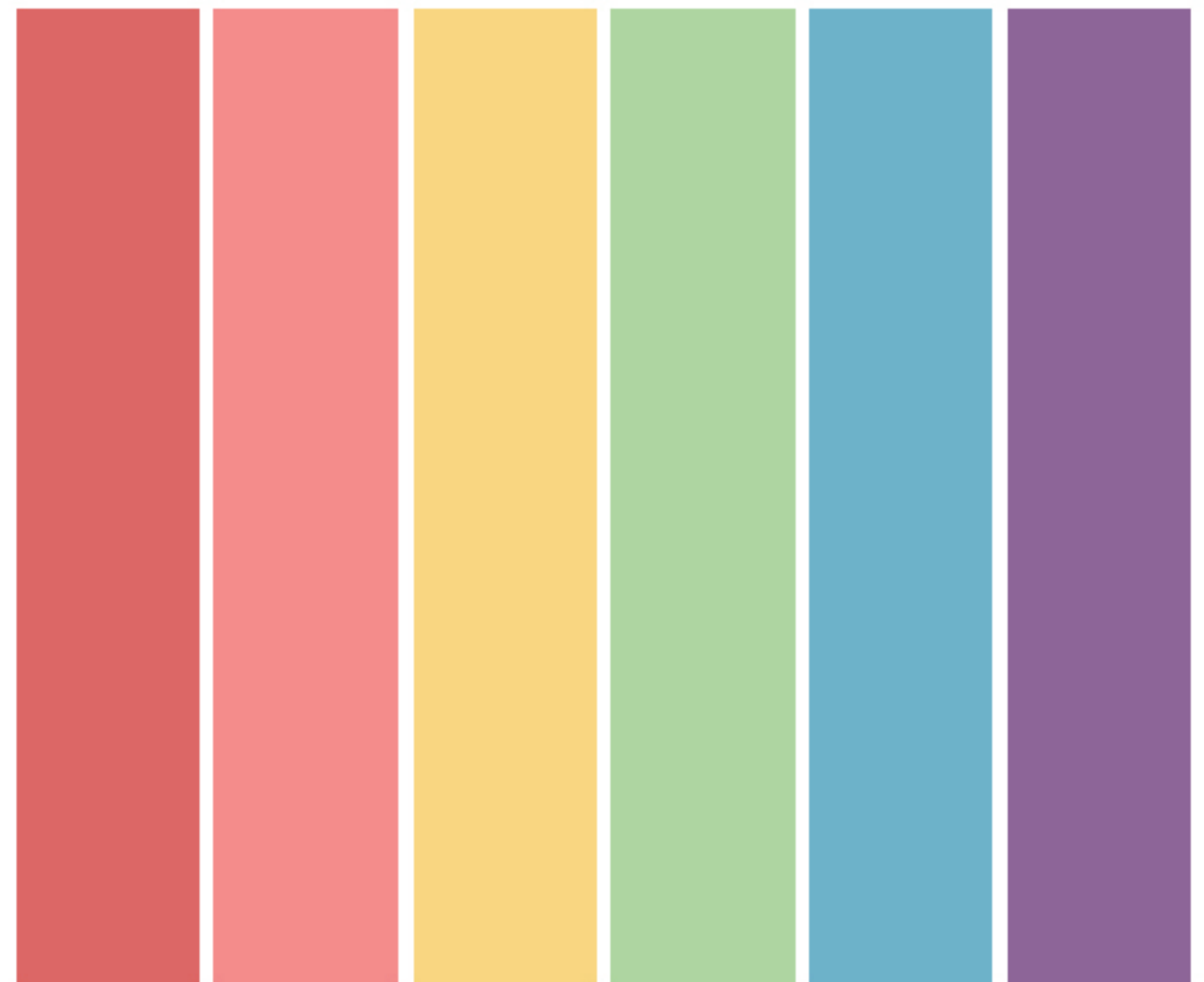
- Tap into your source of energy.
- Make you appear calm and centered.
- Great for relaxing after a long day.
- Wear it to create a sense of self-assurance.



YOUR DARK NEUTRALS CENTER YOU AND CREATE A POWERFUL IMAGE.

These colors:

- Reveal your power.
- Make you appear strong and charismatic.
- Great for establishing authority.
- Wear it to make a strong impression.



YOUR POWER COLORS CREATE EXCITEMENT.

These colors:

- Reveal your lively side.
- Make you appear exciting and approachable.
- Great for fun and carefree events.
- Wear it to feel emboldened.