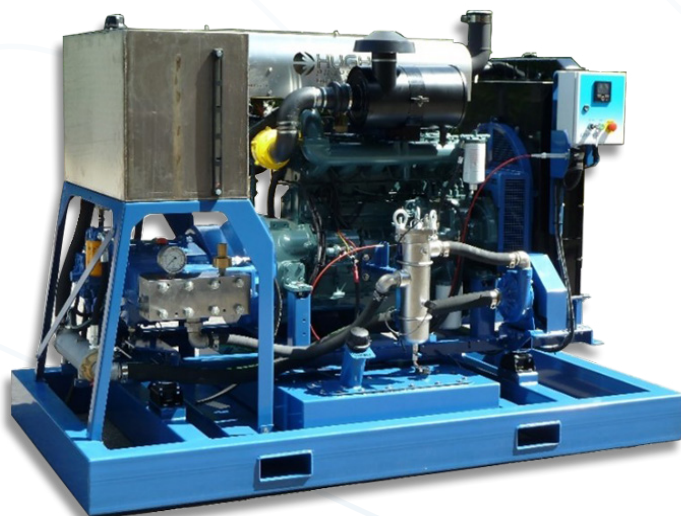




High & Ultra High Pressure Technology

HP120 DS

HP Water Jetting Unit



Doosan PU086T Engine (140kW/188hp)

44lpm at 1100bar
(11.7gpm at 15,950psi)

35lpm at 1400bar
(9.3gpm at 20,300psi)

Refer to the HP120 pump data sheet for alternative performances

HP120 DS, diesel driven, skid mounted, High Pressure water jetting unit, suitable for a wide range of applications. Simple mechanical engine suitable for use in non-regulated regions of the world, making this unit very easy to operate and maintain.

Suitable for single or twin gun / footvalve operation. Applications include surface cleaning, descaling, hydro-demolition, heat exchanger / pipe cleaning, vessel cleaning, subsea cleaning and more.

Dimensions

2.6m long x 1.6m wide x 1.9m high
(102" long x 63" wide x 75" high)

Weight

2,500kg
(5,500lb)

Features

- HP120 pump
- Stainless steel pumphead, solid ceramic or carbide plungers, integral gearbox & SAE engine adaptor
- Transducer for display of discharge pressure & automatic over-pressure shutdown
- Burst disc assembly
- Doosan 6 cylinder, mechanical engine suitable for use in non-regulated regions of the world (not Europe/North america)
- Simple auto-shutdown control panel.
- Pump switches for low inlet pressure & high oil temperature
- Stainless steel water tank, boost pump & dual filtration
- Fabrications are grit blasted & powder coated with a zinc rich primer & durable topcoat suitable for use in corrosive environments

Build Options

- Spark arresting exhaust silencer
- Chalwyn valve
- Manual or pneumatic control valve c/w compressor
- The modular design allows any combination of chassis to be configured including Skids, Crashframes, Site Trailers (Trolleys), Road Trailers, with or without Enclosures
- Mounted in a 10' container (standard or DNV)
- Alternative engines (Tier 3, 4 & 5)
- Full range of accessories for all applications



Crashframe Option



Site trailer option



Road trailer option

Hughes Pumps Limited
Highfield Works, Spring Gardens,
West Sussex, RH20 3BS
United Kingdom

Telephone +44 (0) 01903 892358
Email sales@hughes-pumps.co.uk
Web www.hughes-pumps.co.uk



Certification number 4257

Manufactured in
the UK since 1970

In line with the company's policy of research and development, alterations in design, dimensions and appearance are incorporated from time to time in order to ensure important developments are included at the earliest opportunity. The Company, therefore, reserves the right to alter design, dimensions etc without notice.