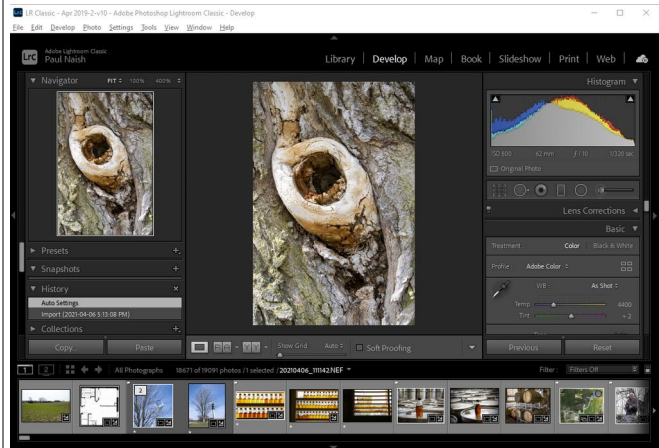
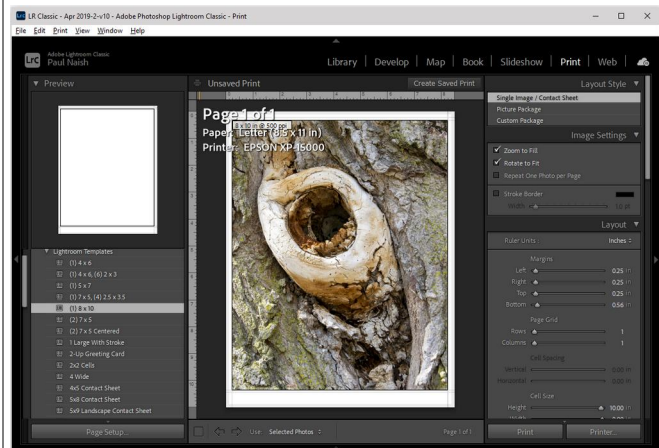


Here's the image I'll Print shown in Develop



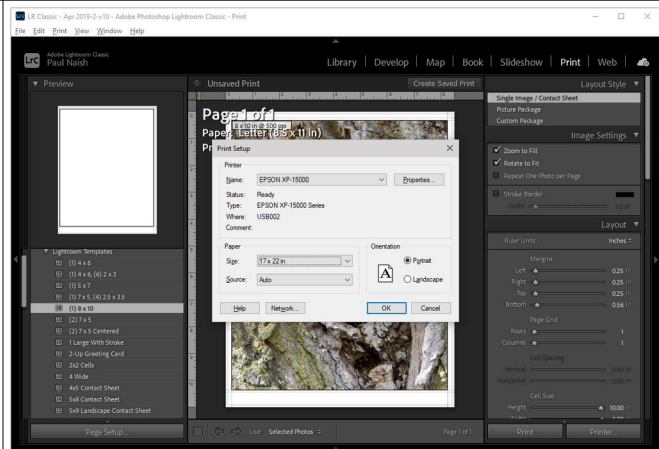
A. In Print

- Select Single Image / Contact Sheet
- In Templates select (1) 8X10 (not actually needed but gives one a good starting point)
- Select Zoom to Fill
- Select Rotate to Fit

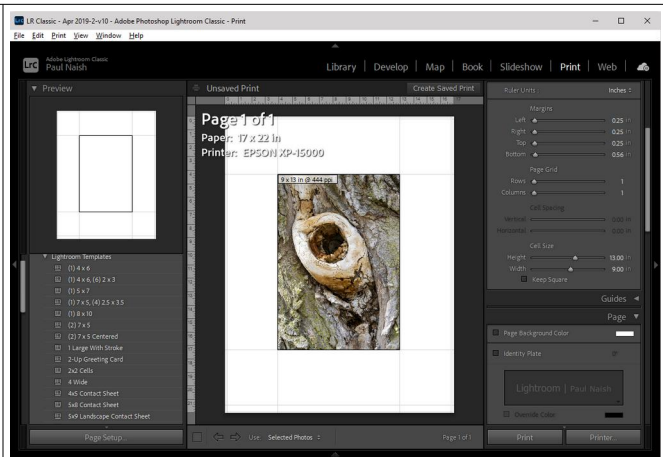


B. Click on Page Setup

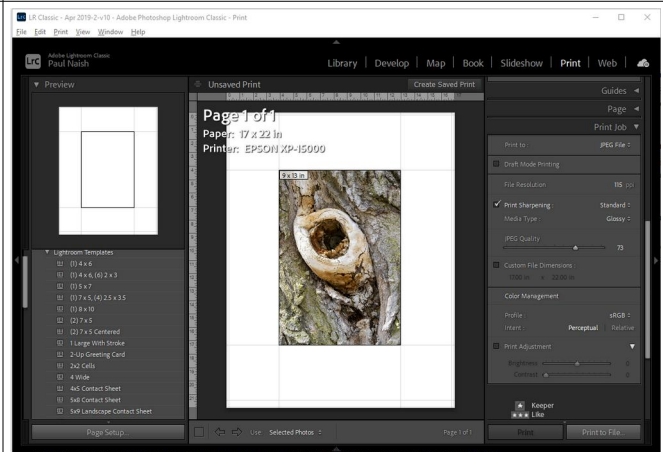
- Select 17x22 in the Size pull down
- Select Portrait



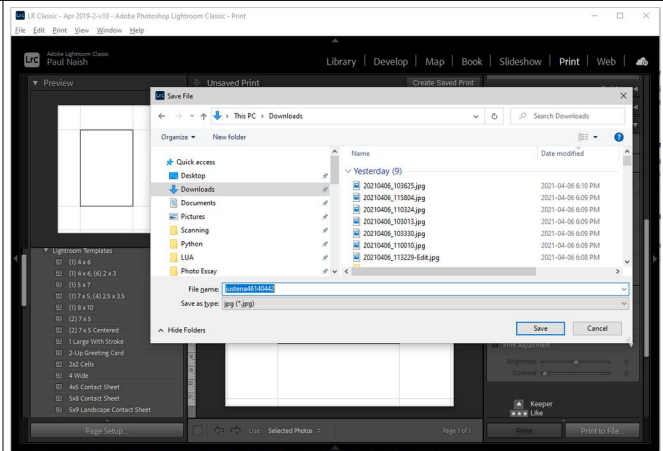
C. Now, as I understand, you want to print it 9x13.
Set the Cell Size to 13 and 9.
If the picture is not centred, adjust the Margins



For this example, I'll select Print to JPEG file to show you the outcome.

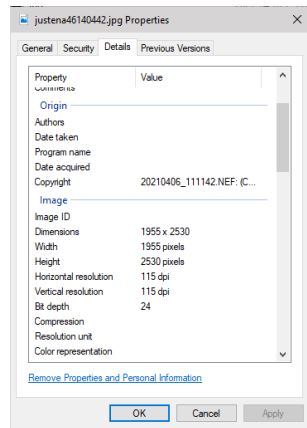


D. Press Print to File and Select a file name



Here's the file:

The properties in Windows look like this



If you divide 1995&2350 by 115 you get 17&22''

